



# network

## enterprise europe



*Business Support on Your Doorstep*



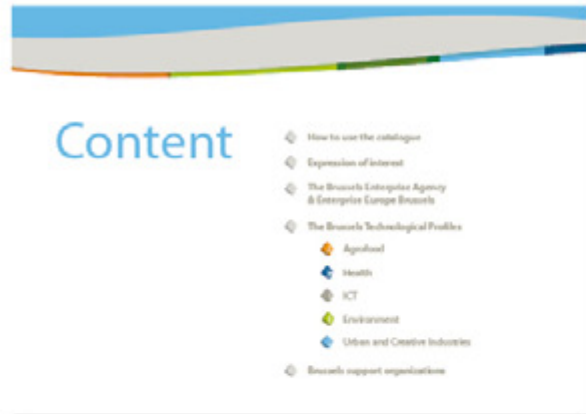
Enterprise Europe Brussels is an initiative of the Brussels Enterprise Agency and BECI, co-financed by the Brussels Capital Region and the European Commission.

# Content



The Brussels Technological Profiles





From the content, you can reach any information of the catalogue with a simple click on the request item.



All technology offers or request are available from the sector menu (name of the company + short description of the technology).



The details of the technologies run on two or three pages. Use the labels down under to navigate in the technology or to another one.

# BEA

## Enterprises Europe Brussels

Tour & Taxis Avenue du Port, 86c b211  
B-1000 Brussels (Belgium)

---

website

[www.bea.irisnet.be](http://www.bea.irisnet.be)

[www.brusselsnetwork.be](http://www.brusselsnetwork.be)

---

Contact person

Nadine Bettens

---

E-mail

[nbe@bea.irisnet.be](mailto:nbe@bea.irisnet.be)

---



At the “Brussels Enterprise Agency”(BEA), the Brussels SME’s, start-ups, self-employed persons, as well as foreign investors will find the answers to all their questions concerning the creation or development of an economic or innovative activity in the Brussels-Capital Region. The “BEA” is structured around four departments, offering a panoply of very concrete services:

### INTERNATIONAL RELATIONS DEPARTMENT

Informs, advises and supports you to find partners for business & technical collaborations beyond Belgian frontiers, informs on funding schemes under FP7, helps you take part in funded European R&D projects for all R&TD sectors.

### TECHNOLOGY & INNOVATIVE PROJECTS

Informs, advises and supports you for all your innovation projects (financing sources, strategic information, partners, etc). Within this department, 6 areas of activity are the focus of particular attention: “Ecobuild”, “Environmental Technologies”, “Food Processing”, “Healthcare”, “New Information and Communication Technologies (NICT)” and “Urban Industries”.

### ECONOMY & STARTERS

Provides you with economic, legal, statistical and regulatory information useful for the creation or expansion of an activity in the Brussels-Capital Region.

### TOWN PLANNING & ENVIRONMENT

Provides concrete responses on the many urban planning and environmental regulations and procedures (permits, public aid available, technologies, etc).



*Business Support on Your Doorstep*

Helping small businesses with the challenges that go beyond their familiar context: that is what the European Commission offers with the “Enterprise Europe network”

Young and very small companies often do not have the means or the time to stay informed about the different European support programmes. Neither can they fully exploit the new technological and commercial opportunities, especially outside their usual scope of action and local markets.

The “Enterprise Europe network” wants to close precisely this gap. Building on an experience of more than 15 years, this network has been launched by the European Commission in 2008 as the one-stop shop where entrepreneurs can get information, advice and a vast array of personalized supporting services.

With its 500 local contact points and 4000+ experienced staff active in more than 40 countries (EU 27 + Armenia, Bosnia and Herzegovina, Chile, China, Croatia, Egypt, Iceland, Israel, Montenegro, Norway, Russia, Serbia, Switzerland, Syria, the former Yugoslav Republic of Macedonia, Turkey, USA), this is simply the biggest International service network for companies.

Even though it is open to companies and institutions of varying size and activities, the network is mainly focused on SMEs. Thanks to the network, entrepreneurs have the opportunity to:

- ◆ Promote, acquire and use innovation in the company
- ◆ Become faster and more efficiently active on an international level.
- ◆ Get information and advice on European policy, law and norms
- ◆ Find quality partners across borders for commercial, innovation or research projects
- ◆ Get access to European projects and financing

These services are free of charge and are based on the “no wrong door” principle: a client may access the network through any network contact point, (s)he will then be either personally assisted or introduced to the relevant network partner.

In Brussels, the network is represented by “**Enterprise Europe Brussels**” (EEB), a collaboration between the Brussels Enterprise Agency (BEA) and Brussels Enterprises Commerce and Industry (BECI).

**Enterprise Europe Brussels** helps companies and researchers of all sectors of industry and research.



# network

## enterprise europe



## Agrofood

- ◆ **ACTICOA**  
Knowledge and consultancy to product fair-trade and upper-quality pralines
- ◆ **BELGIUM BODY SERVICE**  
Natural and plant extract's booster, hangovers remover, energizing compounds
- ◆ **MEURICE INSTITUTE**  
Micro-encapsulation process applied to new aroma, texture and quality food products





## Acticoa

Knowledge and consultancy to product fair-trade and upper-quality pralines

### Contact person

Ms. Mote

---

### Phone

0032 422 00 46

---

### E-mail

nmo@abe.irisnet.be

---

## COMPANY DESCRIPTION

An experienced chocolate maker offers advices and consultancy on the production of high-quality pralines with distinctive fair-trade properties. The consultant benefits from a considerable contacts in the field, regarding the cacao supply in Third Countries and related to the trade market in Belgium. The consultant is looking for pralines production infrastructures and offers knowledge on the receipts and the know-how of praline production. It would like to reach a commercial agreement, with technical assistance for the final development of the product.

## INNOVATION DESCRIPTION

Fair cacao supplying has raised a strong concern among industrial chocolate producers because of an increasing awareness of the consumers for the conditions of the cacao beans production. The supplying of the raw material has been a critical point for the European chocolate industry: the working conditions of the rural manpower has not always been fair. The Belgian chocolatier proposes an alternative chocolate of good quality at a reasonable price with a good knowledge of the origin. His praline is produced differently along the food chain process, from the beans selection to the final quality proposed to consumers. The consultant supervises the raw material selection, according to ethic working conditions and best quality criteria. Few chocolate producers only satisfy to fair-trade criteria.

The second element of his offer is to take into account the consumer's expectations for food: food must have a good impact on health and have welfare properties. Cacao is scientifically recognized to bring benefits for health through flavanol and antioxidant effect, effect on stress, cholesterol and blood pressure. The consultant would like to associate with a healthy food producer.

## INNOVATIVE ASPECTS AND ADVANTAGES

The company has been created by a 25-years-old experienced and famous chocolate maker. The chocolatier has been granted royal top quality label through distinctive recipes and products, awarding his concern for high-quality ingredient and craftman. Successful experience led the company to extend its production beyond the luxury market. It now aims to broaden its offer toward more clients, adapting high-quality standards to semi-industrial process. From this know-how in luxury chocolate production is drawn an upper quality range products, available at a competitive price.

The product set is very large. All pralines combine natural and high-quality ingredients: dark, milk, white, liquor chocolates, truffles, tablets and various flavor and textures: vanilla, moka, buttercream, ganache, marzipan.

## CURRENT STAGE OF DEVELOPMENT

Already on the market

## PARTNERSHIP DESCRIPTION

### Type of partnership sought

- ◆ Small and medium industry- sweet snacks and confectionary producers.
- ◆ Sweet snacks and confectionary producers. Experience with sale and distribution network, ideas for new products launch
- ◆ The partners should have new idea of the launch of the product outside Belgium and have the infrastructure and equipment for chocolate production





## Belgium Body Service

Natural and plant extract's booster,  
hangovers remover, energizing  
compounds

### Address

Rue du Bruel, 26  
B-1130 Brussels BELGIUM

### Website

[www.optinut.com](http://www.optinut.com)

### Contact person

Ms. Mote

### Phone

0032 422 00 46

### E-mail

[nmo@abe.irisnet.be](mailto:nmo@abe.irisnet.be)

## COMPANY DESCRIPTION

Belgium Body Service is a European distributor of food supplements related to leisure, such as sports and well-being. In order to offer more innovating products all around Europe, the company works with foreign brands wanting to enlarge their markets. It is searching for distributors for its products, and commercial agreements with technical assistance.

## INNOVATION DESCRIPTION

The company proposes a set of food supplements impacting health and well-being. Two of them increase the level of physical energy when the organism needs to recover its capacities after a stress, a workout or a party with alcohol excess.

The first food supplement raises the energy level or prevents tiredness, due to jet lag or a brief weakening. "Party-Vitt" is composed of taurine and caffeine. Taurine is an amino-acid known for diminishing the effects of toxins in the body accumulated during an intense workout or after a party night. Caffeine stimulates body and mind and raises physical and mental activities. If you plan ahead an intense activity, you can ingest the food supplement before implementing the activity.

The second food supplement Recup-Vitt is made of a blend of extracts from plants such as artichoke and Siberian ginseng. It addresses excesses after an occasional event. The beneficial effects of artichoke on the liver and the gall bladder are well known, activating the removal of toxins. The active compound will enable party lovers to quickly restore their energy level. Caffeine, vitamins C and B boost the body and avoid deficiencies already a short time after ingestion.

## INNOVATIVE ASPECTS AND ADVANTAGES

Party-Vitt is a caps replacing an energy drink. Contrary to other energy drinks, it contains no sugar and is sweetener free. The caps is simple to swallow and you will feel the stimulant effects very quickly after the ingestion. Neither side effects nor problems for digestion are noted. Party-Vitt has a fashion presentation with attractive colours and a luxury packaging. It is stored in a 4-caps-travel blister. It is the perfect size for the holidays and it fits easily in your bag and luggage. The blister is easy for occasional use.

Recup-Vitt treats hangovers due to an excess of alcohol or a lack of sleep. The ingestion is very simple: one sachet of powder diluted in a glass of water and the mixture is ready to be drunk. Half an hour later, the hangover is gone.... Recup-Vitt has been packaged in two sizes: one monodosis as a travel sachet and also in a box of 15 sachets, with an attractive and colourful packaging.

Party-Vitt and Recup-Vitt are made of high quality ingredients namely amino acids, plant extracts and vitamins. It improves one's life in a natural way.

## DOMAINS OF APPLICATION

Party-Vitt with taurine and caffeine, meets the demands of everyday life for very active people. If you go out at night, one cap will stimulate your energy level during the whole night. Party-Vitt can also be used by students during exams, to boost concentration abilities.

Recup-Vitt is recommended after special events, when the body contains too many toxins due to alcohol excess. This exclusive blend of plants and vitamins helps you to purify the body of toxins and supply the energy required to avoid the nauseous state of a hangover.

## CURRENT STAGE OF DEVELOPMENT

Already on the market

## PARTNERSHIP DESCRIPTION

### Type of partner sought

- ◆ Company selling food supplements
- ◆ Food supplements shops and fitness centers

### Type of partnership sought

- ◆ Commercial partnership



## Meurice Institute

Micro-encapsulation process applied to new aroma, texture and quality food products

---

### Address

Institut Meurice, Haute Ecole Lucia de Brouckère,  
1, avenue E. Gryson, bât 2  
B-1070 Bruxelles.– BELGIUM

---

### Contact person

Ms. Nadège MOTE

---

### phone

+32 2 422 00 46

---

### Email

nmo@abe.irisnet.be

---

## COMPANY DESCRIPTION

A Belgian applied research center (chemical and biochemical engineering department) is specialist in micro-encapsulation process applied to food. It is looking for industrial partners to develop new agro-food products and prototype existing technical expertise. Innovative agro-food entrepreneurs are sought to implement the industrial pilot-scale test of new products and commercial uptake.

## INNOVATION DESCRIPTION

Microencapsulation applied to agro-food industry enables innovative products creation based on new flavors, new textures and active principles. Food applications are still uncommon and represent potential business niche. Microencapsulation's potentiality is under-exploited by agro-food industry, also in the perspective of new food products development. However, encapsulation's numerous potentialities and methods offer specific and customized solution for each business strategy in agro-food sector.

Microencapsulation includes active components in microspheres, surrounded by a cage-molecule- i.e. cyclodextrin-forming an isolating membrane or coating. Encapsulated compounds are numerous: flavor, active principle (mainly used for functional food) or antibacterial ingredients.

The research center has been involved in European research projects and international experts network (Bioencapsulation Research Group). It has a state-of-the-art equipment and infrastructure dedicated to micro-encapsulation. Records are currently made in molecular cooking. The research center is involved in European and international Networks (ISEKI).

## INNOVATIVE ASPECTS AND ADVANTAGES

Following but not limited applications are:

- ◆ food shelf-life increasing, through releasing a specific component across the food product affecting its quality, taste and composition;
- ◆ multi-textured or multi-flavor product (ice-cream or other semi-liquid products) isolating and separating molecules, giving an irregular aspect (crunchy, multicolored, etc.);
- ◆ molecular cooking and aroma creation: new aroma's development;
- ◆ esthetic culinary concept: support for recipes creation (emulsion, atomization, drying);
- ◆ incorporation of active ingredients in a food matrix to give a particular sensory or organoleptic properties.

## DOMAINS OF APPLICATION

Molecular cooking (aromas 'molecule isolation, new texture)  
Functional food: isolation of nutrient by different methods (coating, drying, spray, emulsification)

## CURRENT STAGE OF DEVELOPMENT

Various applications to be tested

## PARTNERSHIP DESCRIPTION

### Type of partner sought

- ◆ Food manufacturer willing to develop innovative set of product (molecular cooking, new aroma and texture development)

### Type of partnership sought

- ◆ Technological partnership
- ◆ Commercial partnership with technical assistance



# network

## enterprise europe



## Health

- ◆ **CHEMCOM**  
Molecular approach to understand taste and olfaction
- ◆ **FLOMEDI**  
Non-invasive cardiology risk assessment through FMD
- ◆ **MEDIDA-SOLUTIONS**  
Cad cam for insole production
- ◆ **MEDITEAM**  
Innovative female condom: safer, comfortable and user-friendly
- ◆ **UCB**  
Connecting Science in New Ways
- ◆ **UNIBIOSCREEN**  
Innovative oncology therapeutics





## CHEMCOM

Molecular approach to understand  
taste and olfaction

### Address

Route de Lennik 802  
B-1070 Brussels BELGIUM

---

### Website

[www.chemcom.com](http://www.chemcom.com)

---

### Contact person

Ms. Nadège MOTE

---

### phone

+32 2 422 00 46

---

### Email

[nmo@abe.irisnet.be](mailto:nmo@abe.irisnet.be)

---

## COMPANY DESCRIPTION

ChemCom is dedicated to become a major player in the discovery of products and tools relevant to chemosensory technologies: e.g. taste, olfaction and other sensory modalities.

ChemCom offers products and services to food, cosmetic, agricultural, industrial, pharmaceutical and biomedical industries.

## INNOVATION DESCRIPTION

Use of molecular and cellular biology to characterize the molecular interactions between odorant and/or tasting molecules with respect to their respective receptors.



## INNOVATIVE ASPECTS AND ADVANTAGES

Only the in vitro approach will provide new and relevant informations leading to the identification and/or the design of new molecules: new odors, blockers of malodors,..

## DOMAINS OF APPLICATION

Cosmetic, agro, food industries as well as health (drug and environmental) industries.

## CURRENT STAGE OF DEVELOPMENT

Development phase – laboratory tested & Available for demonstration – field tested

## PARTNERSHIP DESCRIPTION

### Type of partner sought

- ◆ Company
- ◆ Research Center
- ◆ University

### Specific area of activity of the partner sought

Companies specialised in fine chemistry in relation to flavour, fragrance and food and companies active in research, production and selling of the final products: house care, cosmetics, drugs, pesticides,..

### Type of partnership sought

- ◆ Research partnership
- ◆ Technological partnership
- ◆ Commercial partnership with technical assistance
- ◆ Other



## FLOMEDI

Non-invasive cardiology risk  
assessment through FMD

### Address

Rue Royale 150  
B-1000 Brussels BELGIUM

### Website

[www.flomedi.com](http://www.flomedi.com)

### Contact person

Ms. Nadège MOTE

### phone

+32 2 422 00 46

### Email

[nmo@abe.irisnet.be](mailto:nmo@abe.irisnet.be)

## COMPANY DESCRIPTION

FLOMEDI designs, develops and produces software and electronic medical devices in order to facilitate, simplify, and increase accuracy of diagnoses.

It is an innovative company active in the development of new non invasive medical devices to assess cardiovascular risks, in particular the endothelial function which is considered to be an early indicator of cardiovascular disease. Assessment is done through FMD (Flow Mediated Dilation) .

The developed products are:

- ◆ A software, linked to an ultrasound system which is monitoring the FMD and giving very accurate information on the cardiovascular state of a patient
- ◆ An independent portable medical device allowing the evaluation of the FMD

The targeted markets are:

- ◆ Research centers in cardiovascular diseases
- ◆ University and large Hospitals
- ◆ Screening centres
- ◆ Cardiologists
- ◆ General Practitioner

## INNOVATION DESCRIPTION

Use of molecular and cellular biology to characterize the molecular interactions between odorant and/or tasting molecules with respect to their respective receptors.





## INNOVATIVE ASPECTS AND ADVANTAGES

FMD-i, is software that can be adapted to all ultrasound system types (old and new). Its main advantages are:

- ◆ Ultrasound images processing in real time or post processing;
- ◆ Automatic detection of artery walls;
- ◆ Continuous monitoring of artery movements (Wall Tracking : Distension waveform);
- ◆ Aid to non invasive diagnosis of cardiovascular diseases with an endothelial function assessment (FMD);
- ◆ Measure of Intima-Media Thickness (IMT);
- ◆ Video record (avi) or images hosting (jpg) for archiving and off-line processing;
- ◆ Errors corrections (manual method);
- ◆ Results analysis;
- ◆ Reporting (Excel and Word);
- ◆ Simple and fast usability;
- ◆ Import Video (avi) and Images (jpg, jpeg);
- ◆ DICOM imaging analysis.

CardioVaRisk, is a non-invasive cardiovascular risk assessment device that allows:

- ◆ Heart Rate Variability analysis (HRV);
- ◆ Automatic cuff inflation for the occlusion;
- ◆ Automatic data analysis;
- ◆ Results analysis;
- ◆ Reporting (Excel);
- ◆ Simple and fast usability.
- ◆ Non user dependent;

- ◆ Not need to invest in an ultrasound device;
- ◆ Very easy to use;
- ◆ Easy navigation and logical usability during the patient exam;
- ◆ Extended public target.

## DOMAINS OF APPLICATION

- ◆ Research centres
- ◆ University and large Hospitals
- ◆ Screening centres
- ◆ Cardiologists
- ◆ General Practitioner.

## CURRENT STAGE OF DEVELOPMENT

Available for demonstration – field tested

## INTELLECTUAL PROPERTY RIGHTS

Patent(s) applied but not yet granted

## PARTNERSHIP DESCRIPTION

### Type of partner sought

- ◆ Company
- ◆ Research Center

### Specific area of activity of the partner sought

Distribution of medical devices, if possible in the cardiovascular field. Manufacturers and distributors of ultrasound systems.

### Task(s) to be performed by the partner sought

- ◆ Marketing, sales, and first level support.

### Type of partnership sought

- ◆ Research partnership
- ◆ Technological partnership
- ◆ Commercial partnership with technical assistance



## MEDIDA-SOLUTIONS

Cad cam for insole production

### Address

Rue des liégeois 66  
B-1050 Brussels BELGIUM

---

### Website

[www.medida-solutions.com](http://www.medida-solutions.com)

---

### Contact person

Ms. Nadège MOTE

---

### phone

+32 2 422 00 46

---

### Email

[nmo@abe.irisnet.be](mailto:nmo@abe.irisnet.be)

---

## COMPANY DESCRIPTION

Medida-solutions mills insoles for the podiatry, podo therapy, podo postural therapy, orthopaedics and sport sole manufacturer.

## INNOVATION DESCRIPTION

Medida-solutions stands for progressive, technological and qualitative measurement solutions to obtain an utmost precise measurement of the foot, bases for the adjustment of the insole, after which the insole will be milled computer-controlled



## INNOVATIVE ASPECTS AND ADVANTAGES

- ◆ Utmost precise measurement and analysis of the feet.
- ◆ Digital data (of the feet, database, sole contours and elements) is clean and easy adjustable. A quick data transfer is guaranteed using one cable only.
- ◆ Milling computer-controlled, therefore less dirty work and much healthier for you and your co-workers
- ◆ Files are digitally hold out, no need for extra storage rooms and data is always easily retrieved.
- ◆ Perfect and unlimited reproduction of the insoles.
- ◆ Fast serial production of standard insoles

## DOMAINS OF APPLICATION

The podiatry, orthopaedics, podoposturale therapy and sport insoles production

## CURRENT STAGE OF DEVELOPMENT

Already on the market

## INTELLECTUAL PROPERTY RIGHTS

Exclusive rights

## PARTNERSHIP DESCRIPTION

### Type of partner sought

- ◆ Company

### Specific area of activity of the partner sought

- ◆ The orthopaedic field

### Task(s) to be performed by the partner sought

- ◆ Selling, installing, service.

### Type of partnership sought

- ◆ Commercial partnership with technical assistance



## MEDITEAM

Innovative female condom: safer,  
comfortable and user-friendly

### Address

Avenue d'Orbaix – Bte 5  
B-1180 Brussels BELGIUM

---

### Contact person

Mr. Bonnyns

---

### Phone

0032 422 00 45

---

### E-mail

abo@abe.irisnet.be

---

## COMPANY DESCRIPTION

Mediteam has developed and patented a new female condom. This condom provides, thanks to its particular design, a higher protection against a greater number of sexually transmitted diseases (STDs) and reduces the risk of involuntary pregnancy.

## INNOVATION DESCRIPTION

The Joint United Nations Program on HIV/AIDS estimates that today about 33 million people in the world are infected by HIV/AIDS, more than 50% of which being women.

Thanks to its unique design ensuring a better coverage of the female sexual organs, the Mediteam's condom provides a higher protection against all sexually transmitted diseases, such as HIV/AIDS. Made in latex, this new female condom is comfortable for both partners as it doesn't require extra lubrication and doesn't cause disturbing noises during intercourse and it is of very simple use.



## INNOVATIVE ASPECTS AND ADVANTAGES

Female condoms available on the market are of uncomfortable use. Consequently, these female condoms are not widely used, leaving women's protection against STI's to the use of a male condom. Unfortunately, different surveys have clearly showed that for various practical and psychosocial reasons the male condom is in most cases not used consistently and/or correctly. An alternative is therefore needed to enable women to protect themselves against STI's. The Mediteam's female condom has the following advantages unlike the existing products:

- ◆ Innovative design ensuring global coverage of the sexual organs, thus preventing more efficiently the transmission of various sexual diseases during intercourse.
- ◆ Made of latex, no extra lubrication is required and no disturbing noises happen during intercourse.
- ◆ Very simple to use, with or without inner ring according to user's preferences.
- ◆ Can be placed beforehand or alternatively just before intercourse, preserving the impulse of the partners.
- ◆ No need for the woman to hold the condom in place during intercourse.
- ◆ No risk of penis' misplacing.
- ◆ Affordable estimated retail selling price.
- ◆ No hampering of man's sensitivity as there is no penis constriction.

- ◆ Provides a safe and straightforward solution for couples facing erectile problems.

This new female condom benefits from the active support of health organizations as well as from some renowned medical doctors

## DOMAINS OF APPLICATION

- ◆ Disposable medical/health related products.
- ◆ Health and beauty aids and pharmaceuticals

## CURRENT STAGE OF DEVELOPMENT

Development phase – laboratory tested

## INTELLECTUAL PROPERTY RIGHTS

Patent granted, n°: WO 98/36716

## PARTNERSHIP DESCRIPTION

### Type of partner sought

- ◆ Company

### Specific area of activity of the partner sought

- ◆ Condoms, latex, female health, pharmaceuticals.

### Type of partnership sought

Mediteam is interested in either selling the patent or in licensing agreements



# UCB

Connecting Science  
in New Ways

#### Address

Allée de la Recherche 60  
B-1070 Brussels BELGIUM

---

#### Website

[www.ucb.com](http://www.ucb.com)

---

#### Contact person

Ms. Nadège MOTE

---

#### phone

+32 2 422 00 46

---

#### Email

[nmo@abe.irisnet.be](mailto:nmo@abe.irisnet.be)

---

## COMPANY DESCRIPTION

UCB, Brussels, Belgium is a biopharmaceutical company dedicated to the research, development and commercialization of innovative medicines with a focus on the fields of central nervous system and immunology disorders. Employing approximately 10 000 people in over 40 countries, UCB generated a revenue of 3.6 billion euro in 2008. UCB is listed on Euronext Brussels (symbol: UCB).

## INNOVATION DESCRIPTION

By integrating biology (bio) and chemistry (pharma), we can gain much deeper insights into disease pathways, including the complexities of severe diseases, as well as producing more potent, cost-effective drugs.

- ◆ The unique combination of expertise in large, antibody-based molecules and small, chemically-derived molecules places us in a strong position to realise this ambition.
- ◆ Cimzia®, our New Biological Entity (NBE), targeted at Crohn's disease and rheumatoid arthritis, is one of the first fruits of this synergy of biology and chemistry



## INNOVATIVE ASPECTS AND ADVANTAGES

UCB is an R&D driven company, investing approximately 20% of sales in R&D every year.

Research is the lifeblood of UCB's future and is vital to the organisation.

The strength of our science and technologies is based on:

- ◆ a strong understanding of selected therapeutic areas and disease targets
- ◆ a novel and entrepreneurial use of discovery technologies for the development of breakthrough medicines
- ◆ Embracing innovation in drug development to push the boundaries of R&D.

Fundamental to our philosophy is connecting science in new ways, notably chemistry and biology, to leverage the potential of these two disciplines

## DOMAINS OF APPLICATION

### CNS

UCB has established a leading platform in epilepsy. A group of small molecule drugs is being developed to treat this condition: Keppra® (levetiracetam), brivaracetam and VIMPAT® (lacosamide). A growing portfolio of projects has been established in neurological disorders with a particular focus on Parkinson's disease, (rotigotine patch, Neupro®), fibromyalgia, (lacosamide, rotigotine and Xyrem®), restless legs syndrome (rotigotine), and in diabetic neuropathic pain.

### Immunology

Autoimmune diseases can be classified in many different ways, inflammatory and allergy conditions being two examples. In all cases the common factor is that inflammation results from the inappropriate activation of the cells of the immune system.

Autoimmune diseases comprise a growing group of medical conditions that affect a significant group of individuals worldwide in which the patient's own immune system fails to recognise the body as self, mounts an abnormal immune attack and typically destroys afflicted tissue, for example, the joint in rheumatoid arthritis and the neural tissue in multiple sclerosis.

UCB has a proven track record in the treatment of allergy with the discovery of the world's best-selling anti-histamine Zyrtec® (cetirizine) and Xyzal® (levocetirizine dihydrochloride).

UCB is developing new drugs, both antibody-based and small molecules, designed to treat a range of serious autoimmune diseases including Crohn's disease, rheumatoid arthritis and systemic lupus erythematosus (SLE). UCB is targeting the molecules that regulate the immune system's inappropriate response to the environmental or intrinsic factors that trigger inflammatory disease. The new drugs under development fall into two main classes: genetically engineered antibodies and traditional NCEs, which have different utility and allow UCB to attack inflammatory disease in a range of different ways.

## CURRENT STAGE OF DEVELOPMENT

- ◆ Development phase – laboratory tested
- ◆ Already on the market

## PARTNERSHIP DESCRIPTION

### Type of partner sought

- ◆ Company
- ◆ Research Center
- ◆ University

### Specific area of activity of the partner sought

#### Partnering with the leaders in the pharmaceutical industry

The complexities of severe diseases are beyond the expertise and resources of a single organisation. That is why we have teamed up with partners - we play to our strengths and tap into the organisations with greater or complementary strengths.

From research and development to marketing and supply chain, we have joined forces with organisations such as Amgen (R&D - anti-sclerostin for bone loss disorders), sanofi-aventis (Marketing - Xyzal®, antihistamine) and Lonza (Manufacturing - Cimzia® for Crohn's disease and rheumatoid arthritis).

#### Leveraging our scale and intellectual capital

Networking our resources and expertise not only results in cost reductions but also to cross-fertilise the knowledge and skills of our staff across the world, as well as to exploit opportunities to develop therapies around the clock, across time zones. This is supported by an entrepreneurial, empowered and results-driven culture and a relentless commitment to the highest standards of quality.

### Task(s) to be performed by the partner sought

UCB is seeking to expand its pipeline and product portfolio with innovative products that will treat patients suffering from severe diseases. Our main areas of interest include: central nervous system (CNS) disorders and immunology diseases

### Type of partnership sought

- ◆ Research partnership
- ◆ Technological partnership
- ◆ Commercial partnership with technical assistance





## UNIBIOSCREEN

Innovative oncology therapeutics

---

### Address

Avenue Joseph Wybran 40  
B-1070 Brussels BELGIUM

---

### Website

[www.unibioscreen.com](http://www.unibioscreen.com)

---

### Contact person

Ms. Nadège MOTE

---

### phone

+32 2 422 00 46

---

### Email

[nmo@abe.irisnet.be](mailto:nmo@abe.irisnet.be)

---

## COMPANY DESCRIPTION

Unibioscreen is a Brussels based private specialist oncology discovery & development company. Focus is on innovative "first in class" oncology therapeutics.

Unibioscreen has successfully discovered, patented and developed two drug candidates now in clinical Phase I trials in cancer patients.

Unibioscreen closed a corporate partnership agreement for one clinical candidate with a US based pharmaceutical company.

## INNOVATION DESCRIPTION

UNBS1450 is hemi-synthesized from a novel cardenolide: 2"-Oxovoruscharin, extracted from Calotropis procera root bark. UNBS1450 has a unique MoA : UNBS1450 is a sodium pump antagonist (targeting cancers that over-express the sodium pump alpha subunits).

Preclinical work has shown that UNBS1450 provokes disorganization of the actin cytoskeleton and kills cancer cells through non-apoptotic cell death mechanisms (i.e. autophagy) and that UNBS1450 overcomes major pathways responsible for the failure of existing cancer chemotherapy (multi drug resistance).

A phase I study is ongoing; patient enrollment started on October 8, 2008. Population is cancer patients with solid tumors and lymphoma. Schedule is single IV infusion over 1 hour repeated every 3 weeks. Dose escalation standard 3+3 design.

Goal of the study is to determine the dose limiting toxicities (DLT) & maximum tolerated dose (MTD), to determine pharmacokinetics and pharmacodynamic endpoints, and to look for early evidence of antitumor activity.

The phase I study is open and continues to enroll patients at 2 clinical sites in Europe:

- ◆ Leiden University Medical Center (Dr. Hans Gelderblom)
- ◆ Leuven University Hospital Gasthuisberg (Dr. Patrick Schoffski).

No DLTs and no drug related SAEs/SUSARs so far.

Antitumor activity has not yet been observed (though several patients with prolonged stable disease have been observed).

UNBS5162 is a novel naphthalimide, with a unique MoA, discovered, patented & developed by Unibioscreen. UNBS5162 has in vitro efficacy in a wide range of tumor cell lines & antitumor activity in several in vivo models. Also acts as a radiosensitizer agent in vitro & in vivo.

Phase I trial in cancer patients started in the USA under an IND mid July 2008. Population is patients with solid tumors and lymphoma. Schedule is single IV infusion over 1 hour weekly for 3 weeks repeated every 4 weeks. Dose escalation standard 3+3 design.

Goal of the study is to determine the DLT & MTD, pharmacokinetics and pharmacodynamic endpoints and to look for early evidence of antitumor activity.

The phase I study has been performed at 3 clinical sites in US:

- ◆ Scottsdale Health Care (Dr. Raoul Tibes)
- ◆ University of Arizona (Dr. Daruka Mahadevan)
- ◆ Mayo Clinic (Dr. Donald Northfelt)

As of the end of August 2009, 24 patients have been treated in 8 dose cohorts. The study has been closed late August 2009 to analyze clinical results and alternative schedules.

## INNOVATIVE ASPECTS AND ADVANTAGES

Unibioscreen builds its competitive edge on exploiting through hemi-synthesis the structure activity relationship (SAR) of natural product chemistry and through development and use of unique technologies & demanding orthotopic models of cancer.

## DOMAINS OF APPLICATION

Cancer treatment

## CURRENT STAGE OF DEVELOPMENT

Development phase – laboratory tested

## INTELLECTUAL PROPERTY RIGHTS

Patent(s) applied but not yet granted

## PARTNERSHIP DESCRIPTION

### Type of partner sought

- ◆ Company
- ◆ Pharmaceutical company for partnership transaction

### Specific area of activity of the partner sought

- ◆ Oncology

### Task(s) to be performed by the partner sought

- ◆ Late stage clinical development and route to market

### Type of partnership sought

- ◆ Commercial partnership with technical assistance

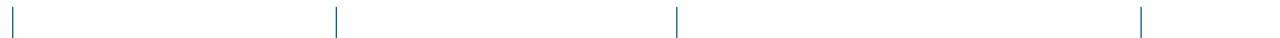


# network

## enterprise europe



- ◆ **ARJUNA**  
RichCast - autonomy and flexibility in webcasting
- ◆ **B2BOOST**  
Business Transaction Simplifier
- ◆ **BLUE4YOU**  
Multi-level e-newsletter tool
- ◆ **EFFICY**  
The most customizable CRM software on the market
- ◆ **FREEMIND**  
Software integration platform for rapid development of web-based supervision and control applications
- ◆ **GETYOO**  
A simple Clickey allows you to connect people, objects & things in real life
- ◆ **NAMAHN**  
Human-machine interfaces for safety-critical systems
- ◆ **NUMECA INTERNATIONAL**  
Software predicting physical behavior of complex systems where fluids play significant role
- ◆ **ODYSSEE MOBILE**  
Flexible mobile Field Force software based on the SaaS (Software as a Service) concept
- ◆ **POWERDALE**  
Your "out of the box embedded domain oriented intelligent logger"





## ARJUNA

RichCast - autonomy and flexibility in webcasting

### Address

Avenue Brugmann, 160  
B-1190 Brussels BELGIUM

### Website

[www.richcast.eu](http://www.richcast.eu)

### Contact person

Ms. Andreani

### Phone

0032 422 00 38

### E-mail

[ban@abe.irisnet.be](mailto:ban@abe.irisnet.be)

## COMPANY DESCRIPTION

Founded in 2005 and located in Brussels, Arjuna is an interactive communication agency specialised in video on internet solutions, multimedia production & rich media consultancy. Arjuna provides state of the art interactive solutions to activate our clients' strategy & vision. Arjuna focuses on the EU Affairs market (institutions, federations, associations) as well as corporate clients.

Arjuna offers RichCast, a complete solution for: Webcasting for events, e-learning, and corporate communications.

## INNOVATION DESCRIPTION

The RichCast solution consists of an elegant and easy-to-use front-end interface and back-end platform for media content. All of the content management and production phases are made extremely easy while still retaining a professional and high-quality result.

RichCast offers an easy-to-use tool - designed to be used frequently and very flexibly - with robotic cameras and touchscreen technology to produce webcasts and communication videos without any video or web knowledge and a backend solution, the RichCast Publisher, to easily manage and publish the webcasts.

**RichCast**  
Enriching Communications

More traffic, interactivity and community through enriched video solutions for e-learning, corporate communications and events.

They have put their trust in us

Logos: SONY, Intel, Philips, TOTOIA, UIP, isobel, and others.

## INNOVATIVE ASPECTS AND ADVANTAGES

RichCast is a high-quality webcasting tool that delivers professional results. It differentiates itself by its ease of use and the fact that the user can be autonomous if he/she wants to through the use of our unique EasyCast tool.

Compared to competitors' products, we can offer more flexibility and autonomy at a lower cost. Furthermore, interactivity is one of the main features: most webinars present slides and video. RichCast has also other features such as "ask a question", "invite a colleague", "give feedback", chat, social media, etc functionalities. This means that viewers feel involved in the webcast. Thus, RichCast contributes to enlarging audiences while developing a stronger relationship with them.

RichCast has got different forms of implementation:

- ◆ the light package that will allow the user to benefit from the innovative nature of the solutions at a minimal investment cost;
- ◆ the advanced package which includes numerous customization options;
- ◆ autonomy package, which makes it possible to easily, cheaply and flexibly produce professional webcasts.

## DOMAINS OF APPLICATION

E-learning, event webcasting, corporate communications, HR communications, marketing, investor relations & executive briefings, product launches

## CURRENT STAGE OF DEVELOPMENT

Already on the market

## INTELLECTUAL PROPERTY RIGHTS

Exclusive rights

## PARTNERSHIP DESCRIPTION

### Type of partner sought

- ◆ Company
- ◆ University
- ◆ Event organisers, audiovisual companies, PR&communication companies

### Specific area of activity of the partner sought

Companies: PR & communication, event organisation, audiovisual suppliers.

### Task(s) to be performed by the partner sought

Integration of the proposed solution in partner' portfolio for technical assistance, development, commercialisation

### Type of partnership sought

- ◆ Commercial partnership with technical assistance



## B2Boost

Business Transaction  
Simplifier

---

### Address

Chaussée de Waterloo, 1453  
B-1180 Brussels BELGIUM

---

### Website

[www.b2boost.com](http://www.b2boost.com)

---

### Contact person

Mr. Nayani

---

### Phone

0032 800 00 63

---

### E-mail

[mna@abe.irisnet.be](mailto:mna@abe.irisnet.be)

---

## COMPANY DESCRIPTION

Founded in 2000, B2Boost is an innovative SME in the field of Integration Service Provider enabling trade partners to optimize their Procure-To-Pay B2B collaboration and transaction processes: Catalogues, Orders, Order Confirmations, Dispatch Advice, VMI, e-Invoicing,...

For more than 10 years, this Brussels based company gives access to its technology and infrastructure "As A Service" and provide the necessary services, support and monitoring to his clients. Furthermore, we design, manufacture, install and service a whole selection of high quality fire extinguishers in different competences and fire detection systems.

The developed products are :

- ◆ Business Transactions Management - Full management of B2B electronic messaging and EDI
- ◆ Private Exchange - B2B extranets and web applications
- ◆ TRIM - Remote Inventory Management. Visibility and analysis on daily/weekly sell-through and inventory data in points-of-sales.
- ◆ Electronic Invoicing - Multi-channel, B2B legally compliant electronic invoicing in all European countries.

## INNOVATION DESCRIPTION

The solutions developed by B2Boost are multiple but have the same target, which is to simplify business transaction.

Solutions developed by our company are in the field of management of B2B electronic messaging and EDI, B2B extranets and web applications, Remote Inventory Management. Visibility and analysis on daily/weekly sell-through and inventory data in points-of-sales (TRIM) and multi-channel, B2B legally compliant electronic invoicing in all European countries.

## INNOVATIVE ASPECTS AND ADVANTAGES

B2Boost is present in different industries and is the unrivalled leader in providing data exchange automation in the interactive gaming business, connecting 80% of the European retail distribution volume, region for which we are leader.

- ◆ We are Business Transaction Management experts
- ◆ Highest reliability, security and performance standards
- ◆ Order-To-Pay

### Key references:

- ◆ Electronic Arts
- ◆ Ubisoft
- ◆ British Telecom

## DOMAINS OF APPLICATION

B2Boost allows sellers and buyers to facilitate and optimize their transaction data exchanges to gain productivity, efficiency and precision. The B2Boost service allows your company to reduce operational costs by saving time and money.

## CURRENT STAGE OF DEVELOPMENT

Already on the market

## INTELLECTUAL PROPERTY RIGHTS

Secret know-how

## PARTNERSHIP DESCRIPTION

### Type of partner sought

- ◆ Company

### Specific area of activity of the partner sought

B2Boost is looking for any company from any sector interested in work with us by using our services

### Task(s) to be performed by the partner sought

Please contact us for more details on the task to be performed

### Type of partnership sought

- ◆ Technological partnership
- ◆ Commercial partnership with technical assistance



## BLUE4YOU

Multi-level e-newsletter tool

---

### Address

Avenue Brugmann, 611  
B-1080 Brussels BELGIUM

---

### Website

[www.blue4you.be](http://www.blue4you.be)

---

### Contact person

Ms. Andreani

---

### Phone

0032 422 00 38

---

### E-mail

[ban@abe.irisnet.be](mailto:ban@abe.irisnet.be)

---

## COMPANY DESCRIPTION

Located in Brussels, Blue4You is an interactive communication agency whose approach is based on the combination of 3 essential skills: Strategy, Creation and Techniques.

Blue4You develops rich customer-tailored communication tools delivering strong results to an increasing range of institutional (European institutions, international institutions, ...) and corporate customers. Doing so, Blue4You takes regularly part in international consortia tendering for EC framework contracts. Amongst its ongoing national framework contracts, Blue4You is in charge of the Belgian Prime Minister webportal as well as an increasing number of Belgian Ministries (Foreign Affairs, Finances, ...) and Federal institutions.

Besides Blue4You R&D department develops a range of innovative cutting-edge in-house applications that are constantly on the move and are regularly showcased in international events (CeBIT, ...). This is namely the case of Nomadmailer, a multi-level e-newsletter generation and sending platform that offers one of a kind functionalities to organizations willing to reach global while communicating local.

## INNOVATION DESCRIPTION

A multi-level e-newsletter generation and sending platform that offers one of a kind functionalities to organizations willing to reach global while communicating local. Actually, the proposed technology is a customizable multi-user, multi-language, multi-level e-newsletter generation tool allowing to blend inputs from a central organisation with those of its local relays.

As such, the tool allows a central organisation to generate multiple versions of one newsletter to address the end-readers in their own languages with a blend of general themes and local issues, in-line with communication best practices.

Amongst other features, this multilevel e-newsletter tool allows the administrator, of a central organisation, to:

- ◆ Manage the library of e-newsletters
- ◆ Create an eye-catching html newsletter
- ◆ Share it with the local relays to adapt some contents
- ◆ Manage all lists of subscribers
- ◆ Send, on the fly, all modified versions of the newsletter; this centrally or locally
- ◆ Enrich the communication with add-ons such as statistics, polls, thematic forums or comments ...

The multilevel e-newsletter tool is specially designed for the institutions and corporations that wish to achieve optimum 1 to 1 communication with their end-readers.



This means that the e-newsletter content may be ideally divided in different zones (e.g.3 zones):

- ◆ Zone 1 is allocated to the central organisation in order to communicate on general themes.
- ◆ Zone 2 is available for all local relays to address their own issues. This can either be done in the same language as the general themes or in any other language.
- ◆ Zone 3 allows for a personalized introductory text by the local relay.

This kind of splitting makes the tool ideal for international institutions, corporations, local administrations, political parties and unions, sport federations, franchisers.

## INNOVATIVE ASPECTS AND ADVANTAGES

The proposed technical solution is the only truly multi-level e-newsletter / e-mailing solution allowing to blend, edit and modify inputs from different sources (the central organisation and its local relays) resulting in the generation of multiple tailored versions of a newsletter sent to as many lists of subscribers. As such, it allows a central organisation to act globally while communicating local in tune with communication best practices.

The tool is based on state of the art web technologies (Flex, ...) for optimum intuitivity (drag and drop, etc...) and is perfectly tailored to the graphical/functional needs of all customers be they institutional or corporate.

## DOMAINS OF APPLICATION

This tool has been specially designed to answer the needs of multi-level institutional or corporate organisations (structured in head office and local relays) to communicate with a combination of central and local themes. It is ideal for international institutions, corporations, local administrations, political parties and unions, sport federations, franchisers.

## CURRENT STAGE OF DEVELOPMENT

Already on the market

## INTELLECTUAL PROPERTY RIGHTS

Copyright(s) registered

## PARTNERSHIP DESCRIPTION

### Type of partner sought

- ◆ Communication / Web agency / PR

### Specific area of activity of the partner sought

Companies having technical skills and knowledge of their local market in order to integrate the proposed solution in their portfolio and develop the product penetration abroad

Besides, as a regular contributor to EEC institutions web communication contracts, Blue4You is interested to join consortia of companies / organisations aiming at tendering for EEC institutions framework contracts.

### Task(s) to be performed by the partner sought

See above

### Type of partnership sought

- ◆ License agreement
- ◆ Technological partnership (joint venture, joint further development, adaptation to specific needs)
- ◆ Commercial partnership with technical assistance (technical consultancy provided)



## EFFICY

The most customizable CRM software on the market

---

### Address

Plejadenlaan 11  
B-1200 Brussels BELGIUM

---

### Website

[www.efficym.com](http://www.efficym.com)

---

### Contact person

Mr. Nayani

---

### Phone

0032 800 00 63

---

### E-mail

[mna@abe.irisnet.be](mailto:mna@abe.irisnet.be)

---

## COMPANY DESCRIPTION

Efficy is a Brussels based company which started his activity in 2005.

Efficy is also the name of the product developed by this SME, which consist on a CRM (Customer Relationship Management) software specialist.

Although Efficy Headquarters is located in Brussels, the company has permanent representatives in Benelux, France and Germany.

Efficy has recently signed partnership agreements all over the world.

- ◆ With "ICC SOLUTIONS" (Global Leader in Provision of Recognized Test Solutions) for Gulf countries (Saudi Arabia, Qatar, Kuwait and Dubai).
- ◆ With the Turkish company "FINS" for Turkey.
- ◆ With the German company "MEGASOLUTIONS" for Germany.
- ◆ ith over 400 customers and 7000 users, Efficy's CRM has been elected "Best Buy Web CRM" by Data News, the IT reference magazine in Belgium.

## INNOVATION DESCRIPTION

Efficy CRM (Customer Relationship Management) is a completely web-based and very easy-to-use European CRM.

By centralizing all types of data about customers and making this knowledge accessible for everyone authorized, a high degree of efficiency is reached. Efficy CRM provides a permanent access to your company's information such as turnover, open invoices, stock, and delivery time. Moreover, data can be consulted from anywhere in the world where you have an internet connection. PC or MAC? Mozilla Firefox or Internet Explorer? Outlook or Lotus Notes? It doesn't matter... we are fully compatible.

Maintaining a CRM implementation is high-priced. Efficy integrates the unique "zero maintenance architecture" technology that guarantees total protection of your investment.

This high degree of accessibility makes it able for companies with several locations – even abroad – to let all of the employees function as a team, using the same procedures and the same information/data.

Because each company is unique, Efficy is the most customizable software on the market!

## INNOVATIVE ASPECTS AND ADVANTAGES

Efficacy is a unique and high quality CRM which:

- ◆ offers a framework in which you are the boss: you can adapt the software to the needs and requirements of your customers' businesses and customize forms, lists, graphic icons and settings.
- ◆ the zero maintenance design guarantees a low cost of ownership.
- ◆ is fast and simple to use, easy to maintain and update. Your users will be able to operate the system very quickly, so your customers get a rapid return on your investment.
- ◆ is web a software that is accessible via an Intranet or by Internet.
- ◆ is integrated with other existing programs (Word, Excel, Outlook, Lotus Notes) and can easily fit with your accountancy software packages, ERP systems and others.
- ◆ is completely multilingual, including the lookup lists

## DOMAINS OF APPLICATION

- ◆ Database and file management
- ◆ Business and office
- ◆ Integrated software

## CURRENT STAGE OF DEVELOPMENT

Already on the market

## INTELLECTUAL PROPERTY RIGHTS

None

## PARTNERSHIP DESCRIPTION

### Type of partner sought

- ◆ Company

### Specific area of activity of the partner sought

Sellers and Reseller / Integrator / Marketing / Support / Document Management / Projects

### Task(s) to be performed by the partner sought

Partners are sought in order to perform one or more of the following tasks :

- ◆ Reselling / Installing Efficacy CRM
- ◆ Configuring the software (which is 50% of the project)

### Type of partnership sought

- ◆ Commercial partnership with technical assistance



## FREEMIND

Software integration platform for rapid development of web-based supervision and control applications

---

### Address

Rue de la Technologie 1  
B-1082 Brussels BELGIUM

---

### Website

[www.freemind-group.com](http://www.freemind-group.com)

---

### Contact person

Ms. Andreani

---

### Phone

0032 422 00 38

---

### E-mail

[ban@abe.irisnet.be](mailto:ban@abe.irisnet.be)

---

## COMPANY DESCRIPTION

Freemind was founded in 2002 by a team of managers and engineers with over 20 years of experience in delivering OSS services and ICT solutions to telecom operators and large corporations worldwide. By teaming up with partners, leaders in their application domains, Freemind extended its services to Energy Efficiency management and Integrated Security and Building Management.

Freemind Products & Solutions commercializes Leonardo and Energies, Web-Based Supervision and Control solutions that enable the energy, technical and security aspects of infrastructures such as buildings, industrial sites and renewable energy production parks to be supervised and controlled.

Freemind is active in complementary domains, providing high-quality ICT Consulting Services, building WEB-Control Solutions for complex infrastructures, and developing and distributing LEONARDO, a software product used to deploy WEB-Control Solutions in the areas of Security, Building Management, Energy Management and Telecoms.

## INNOVATION DESCRIPTION

Our Web Control Solutions allow you to monitor, integrate and manage the energy, technical and security aspects of infrastructures such as buildings, industrial sites and renewable energy production parks.

### Key features

- ◆ Highly ergonomic, WEB-based user interface
- ◆ Real-time handling of alarms, warnings and signals
- ◆ Multi-user levels access to distributed sites
- ◆ Pro-active and usage-based maintenance via advanced reporting tools and Key Performance Indicators (KPIs).
- ◆ Crisis management via specific and full scenarios
- ◆ Transfer of knowledge basis and procedures
- ◆ Rapid interventions via powerful dashboard and control screens
- ◆ Pre-defined application models managed with an OODB
- ◆ Highly scalable: from a few hundred to over a million objects
- ◆ SOAP/XML-based architecture and Java API for easy integration with corporate applications

## INNOVATIVE ASPECTS AND ADVANTAGES

Multi-vendors: multiple standard and proprietary based protocols available for almost any existing system . Multi-sites and multi-users: remote control of devices . Real-time: fault detection, warnings and signals, crisis management via complex procedures . Easy integration: SOAP/XML architecture for integration with corporate applications

## DOMAINS OF APPLICATION

### Integrated Building Management System for multiple vendor and multiple site:

- ◆ HVAC integration
- ◆ LIGHTING integration
- ◆ ELEVATOR integration
- ◆ POWER MANAGEMENT integration
- ◆ Integrated HVAC, lighting, elevator and power management systems

### Integrated Security Management Systems for multiple vendor and multiple site:

- ◆ ACCESS CONTROL integration
- ◆ DETECTION integration
- ◆ FIRE DETECTION integration
- ◆ CCTV integration
- ◆ Integrated access control, intrusion detection, fire detection and CCTV systems

## Applications for Energy Monitoring:

- ◆ Automatic Meter Reading of electricity, gas and water tellers
- ◆ Office and industry building energy efficiency monitoring and simulation
- ◆ Photovoltaic park energy production monitoring and simulation
- ◆ Wind park energy production monitoring and simulation

## CURRENT STAGE OF DEVELOPMENT

Already on the market

## INTELLECTUAL PROPERTY RIGHTS

Copyright(s) registered

## PARTNERSHIP DESCRIPTION

### Type of partner sought

- ◆ Company

### Specific area of activity of the partner sought

- ◆ Companies looking for a single seat supervision and control system for managing all building related techniques.
- ◆ Companies looking for increasing the energy efficiency of buildings, industries and data centers.
- ◆ Investors and operators of renewable energies production parks wanting to maximize the performance of the entire portfolio while minimizing the monitoring effort.
- ◆ Partners for the commercial distribution and technical implementation

### Task(s) to be performed by the partner sought

Partners are sought in order to perform one or more of the following tasks :

- ◆ integrating the application with other end-user solutions
- ◆ implementing the application
- ◆ selling the application in specific territories

### Type of partnership sought

- ◆ Commercial partnership with technical assistance



## GETYOO

A simple Clickey allows you to connect people, objects & things in real life

### Address

Rue des Tanneurs 60a  
B-1000 Brussels BELGIUM

### Website

<http://getyoo.com>

### Contact person

Mr. Nayani

### Phone

0032 800 00 63

### E-mail

[mna@abe.irisnet.be](mailto:mna@abe.irisnet.be)

## COMPANY DESCRIPTION

Getyoo is a start-up developing a physical device and a social networking platform. The online network is relayed in real life by a simple wireless device, the technology (Clickeys) allows users to connect to people, objects and 'things' in real life in order to collect content or exchange contact information.

Our developed products are:

Clickeys: mobile devices receiving and sharing information.

Tags: small labels containing information, such as coupons – pdf documents – ecommerce, etc. – that can be read by Clickeys.

Getyoo's Website: is a social platform that centralizes and allows reading the information collected in real life and stored into the "clickeys".

## INNOVATION DESCRIPTION

EClickeys are Near Field Communication devices allowing people-to-people or people-to-objects interactions. NFC is a new, short-range wireless connectivity technology that provides intuitive, simple, and safe communication between electronic devices. Communication between two Clickeys occurs when they touch one another: the single press of a button can establish the connection and send a virtual business card. The process is the same between Clickeys and Tags. Users just need to insert their Clickey into their computer's USB port to retrieve all the information selected earlier.



## INNOVATIVE ASPECTS AND ADVANTAGES

There several are mobile phone applications enabling digital business cards exchanges in the real world but Getyoo does a lot more than that. It is a free web-based platform allowing people to gather, in one single place, all their social activity on the web. They can then link their multiple social networks profiles to a Clicky and share them in the real world. While mobile phones applications allow just contact information exchanges, Getyoo aggregates information coming from social websites allowing users to follow their contacts' activity in one spot. Thus, with Getyoo there is no need to be on Twitter or Facebook to be able to see what people are doing on those networks.

Moreover, Getyoo gives a lot more possibilities to exhibitors or advertisers present on events. While expensive interactive kiosks or Bluetooth hotspots allow just to send content to mobile phones, Getyoo gives exhibitors the opportunity to link digital content to tags for a small price and to follow what happens with this content after the event. Visitors can select any type of digital content, even heavy files, and consult it on Getyoo. They can then share this content with other users and participate in discussions on event related communities. Exhibitors have access to comprehensive users statistics and traceability concerning real world and online use.

Finally, Getyoo is a good solution to paper waste by redirecting users directly to online information they want to keep.

## DOMAINS OF APPLICATION

We provide this Business to Business (B2B) or Business to Clients (B2C) events.

### Application examples:

- ◆ Fairs
- ◆ Seminars
- ◆ Salons
- ◆ Conferences
- ◆ Festivals
- ◆ International Meetings
- ◆ Symposiums

## CURRENT STAGE OF DEVELOPMENT

Already on the market

## INTELLECTUAL PROPERTY RIGHTS

Patent granted in 2009

## PARTNERSHIP DESCRIPTION

### Type of partner sought

- ◆ Company
- ◆ University
- ◆ Other: Event Organizers, Advertising and Communication Agencies, Brand Marketing Departments, Electronics and Hardware suppliers, RFID and NFC product development companies and suppliers, Mobile Phones Applications Development, Website Development

### Task(s) to be performed by the partner sought

Partners are sought in order to perform one or more of the following tasks :

- ◆ Developing applications for mobile phones
- ◆ Selling the solution to potential clients
- ◆ Hardware and Software research
- ◆ Producing Clickeys
- ◆ Supplying electronic components
- ◆ Research tasks
- ◆ Website applications, Social Networks Application Development
- ◆ Social Network Aggregation Further Developments
- ◆ Website Development
- ◆ Data Mining
- ◆ Statistics

### Type of partnership sought

- ◆ Commercial partnership with technical assistance



## NAMAHN

Human-machine interfaces  
for safety-critical systems

### Address

Rue de la limite 21  
B-1210 Brussels BELGIUM

---

### Website

[www.namahn.com](http://www.namahn.com)

---

### Contact person

Mr. Nayani

---

### Phone

0032 800 00 63

---

### E-mail

[mna@abe.irisnet.be](mailto:mna@abe.irisnet.be)

---

## COMPANY DESCRIPTION

Namahn is an innovative SME in the field of Human-centered design of software-intensive products and services. This company, based in the heart of Brussels capital region, is active since 1987.

## INNOVATION DESCRIPTION

Since a few years, Namahn is developing know-how about Human-Machine Interfaces (HMIs) for safety-critical systems. Our usual approach to human-centred design is specialised so as to support essential capabilities of an operator of a safety-critical system (a control room, a vehicle cockpit, an e-health application or surgery room, a command and control centre) and addresses challenges such as:

- ◆ minimise the risk of error
- ◆ ensure that, in case of an emergency, the user can still perform his/her complex task
- ◆ enhance the user's situation awareness
- ◆ manage the trade-off between user and system control



## INNOVATIVE ASPECTS AND ADVANTAGES

### A thorough approach grounded in practice and research

Throughout its 22 years of existence and through hundreds of projects, Namahn has developed an extensive expertise in the practice of designing human-machine interaction, both for consumer and professional applications. This experience is grounded in an ongoing effort to master state-of-the-art techniques.

Namahn started its specialization in HMIs for safety-critical applications through a number of locally funded research projects. As part of case studies in these projects, Namahn acquired experience with safety-critical systems in the areas of control rooms (for transportation) and medical applications (imaging and decision support).

Namahn now applies its extended methodology to the design of safety-critical HMIs in commercial projects in the area of transportation (control rooms).

What makes Namahn's approach to safety-critical HMIs unique is the combination of insights from cognitive ergonomics with a design-thinking approach.

## DOMAINS OF APPLICATION

Safety-critical systems in the areas of:

- ◆ Transportation (cockpit, control room, Intelligent Transport Systems, Car2Car, Car2Infrastructure communication)
- ◆ E-health (surgery, intensive care equipment, medical imaging and patient modeling to aid decision support, remote patient monitoring)
- ◆ Utilities and environmental monitoring (energy plant control room, flow planning, environmental monitoring)
- ◆ Command and control (emergency response)

## CURRENT STAGE OF DEVELOPMENT

Already on the market

## INTELLECTUAL PROPERTY RIGHTS

Secret know-how

## PARTNERSHIP DESCRIPTION

### Type of partner sought

- ◆ Company
- ◆ Research Center

### Specific area of activity of the partner sought

#### Companies

Namahn seeks to collaborate with companies which develop complex, socio-technical systems such as listed above (domains of application). We can participate in the design of such systems from the early stages, by bringing in a human-centered perspective and a focus on safety-critical aspects of the human-machine interaction.

#### Research Centers

Namahn seeks to collaborate with research centres specialized in HMI for safety-critical systems. Namahn takes the role of technology and knowledge transfer: applying research findings to real-world applications.



## Task(s) to be performed by the partner sought

### Companies

The design of the technical component of a safety-critical system, from ideation over conceptual design to prototype and implementation. Close collaboration with Namahn all along the design process, including the testing activities.

### Research Centres

Literature study on particular topics related with safety-critical HMIs, development and sharing of ideas and methodologies, related with safety-critical HMIs.

### Type of partnership sought

- ◆ Research partnership
- ◆ Technological partnership
- ◆ Commercial partnership with technical assistance





## NUMECA INTERNATIONAL

Software predicting physical behavior of complex systems where fluids play significant role

---

### Address

Avenue Franklin Roosevelt, 5  
B-1050 Brussels BELGIUM

---

### Website

[www.numeca.be](http://www.numeca.be)

---

### Contact person

Ms. Andreani

---

### Phone

0032 422 00 38

---

### E-mail

[ban@abe.irisnet.be](mailto:ban@abe.irisnet.be)

---

## COMPANY DESCRIPTION

NUMECA develops edits and commercializes CFD (Computational Fluids Dynamics) software, used for the simulation, design, and optimization of fluid flow in industrial products and heat transfer.

Following industry requirements and needs, we have developed several high-tech innovative products customized to families of applications.

Thus, we cover the whole CFD chain, from automated grid generators to flows solvers including optimization system and visualization system.

The NUMECA products target a very widespread range of possible fields of application, covering Aerospace, Energy, Power Generation, Ship Building and Automotive industries. We have worldwide customers such as Boeing, Airbus, Rolls-Royce, Alstom, ABB, MHI, KHI, Honeywell, Toyota and many other big constructor groups.

## INNOVATION DESCRIPTION

Our software environments integrate CAD (Computer-Aided Design) modeling capabilities, advanced pre- and post-processing software, powerful flow solvers, optimization kernels, and a wide range of multiphysics models dedicated to specific areas of application.

NUMECA's grid generation allow the generation of structured and unstructured full hexahedral meshes, providing a high grid quality within short time frames.

NUMECA's visualization software provides a powerful, generic, and object-oriented platform to perform all standard qualitative and quantitative 2D/3D operations.

## INNOVATIVE ASPECTS AND ADVANTAGES

NUMECA International's product strategy is based on the development of automated and customized Flow Integrated Environments (FINETM) for rapid design, simulation and optimization of flow problems. Our software environments cover a wide range of applications while providing feature-specific modules and capabilities dedicated to specific areas of application.

As a center of excellence, NUMECA participates in a large number of research projects with university departments, research laboratories and leading industrial partners, allowing us to offer the latest technology breakthrough to our customers. Our software products are today largely recognized for their superior performances and capabilities.

Through the recent introduction of new technology we offer today a significant gain in terms of CAD repairing and grid generation of complex geometries as well as in solver with a global speed up of around 10 to 20 compared to other in-house or commercial CFD codes. These competitive advantages allow a significant gain in productivity in the design cycle time of industrial products, by at least one order of magnitude.

Our software and services bring the following benefits to our customers:

- ◆ Minimizing engineering and calculation time;
- ◆ Highly accurate simulations for better product and systems development;

- ◆ Multiphysics collaborative framework;
- ◆ New generation of pre- and post-processing systems;
- ◆ Integrated CAD design and optimization systems

## DOMAINS OF APPLICATION

Our software cover a wide range of applications while providing feature-specific modules and capabilities dedicated to specific areas of application. They are used by product developers, design, and research engineers, allowing them to reach superior product quality and performances at a reduced engineering cost.

The most targeted sectors are the following: Aerospace, Aeronautics, Propulsion, Power Generation, Automotive, Marine, Shipbuilding, environment, combustors...

## CURRENT STAGE OF DEVELOPMENT

Already on the market

## INTELLECTUAL PROPERTY RIGHTS

Copyright(s) registered

## PARTNERSHIP DESCRIPTION

### Type of partner sought

- ◆ Company
- ◆ Research Center
- ◆ University

### Specific area of activity of the partner sought

Numeca International is looking for partners in the following sectors: aerospace, aeronautic, automotive, energy, turbomachinery.

### Task(s) to be performed by the partner sought

Numeca International looks for partners which can contribute to the development of its software systems components in terms of:

- ◆ human computer interaction,
- ◆ graphical User interface,
- ◆ grid generation,
- ◆ flow solver,
- ◆ visualization and/or optimization,
- ◆ implementation of new modules in multiphysics.

### Type of partnership sought

- ◆ Research partnership
- ◆ Technological partnership
- ◆ Commercial partnership with technical assistance



## ODYSSEE MOBILE

Flexible mobile Field Force software based on the SaaS (Software as a Service) concept

### Address

Avenue Stalingrad, 100  
B-1000 Brussels BELGIUM

### Website

[www.odysseemobile.com](http://www.odysseemobile.com)

### Contact person

Ms. Andreani

### Phone

0032 422 00 38

### E-mail

[ban@abe.irisnet.be](mailto:ban@abe.irisnet.be)

## COMPANY DESCRIPTION

Odyssee specializes in the development and implementation of mobile field software solutions to efficiently promote communication and exchange of information between the company back office system and employees in the field.

Our solutions cover the need of:

- ◆ Mobile Sales Force Automation
- ◆ Mobile Field Force Service

Odyssee Field Solutions increase productivity and improve work flow efficiency.

Odyssee Field Solutions work according to the SaaS (Software as a Service) model. This guarantees for our customers a "Care-free software": We host Odyssee Field Solutions on our server for our customers and we take care of the software, hardware and maintenance.

Software as a service is cheaper in maintenance, always using the latest version, quicker to change, user-friendlier and extremely easy to implement.

## INNOVATION DESCRIPTION

The mobile Filed workers can work with the information which comes out of their back office system in the field without having to be connected to the internet. Automatically they can transmit data which was generated in the field back to the back office system as well.

Odyssee Field Solutions opens a new way of working: no papers, no information gets lost and everybody is informed in almost real-time what is happening in the company.

Odyssee Field Solutions can be easily adapted to the customer business processes.

### In short

Odyssee Solutions are delivered as Software as a Service (SaaS).

The main advantages of the Odyssee Solutions are:

- ◆ advanced security enhancements and flexibility,
- ◆ application flexibility,
- ◆ tools to handle mobile devices,
- ◆ mobile extensions.

## INNOVATIVE ASPECTS AND ADVANTAGES

Many field solutions are installed and individually programmed for the customers adapted to one back office system (ERP).

Odyssee Mobile Field Solutions can be adapted to any ERP system and is using the "Google" Principles: there is one core solutions and every customer gets his "view" on the solution, but all structure, maintenance, new functionalities, etc. is provided to all users at the same time.

Customers are always working on the very last version of the software.

## DOMAINS OF APPLICATION

### Field Service workers in following companies:

- ◆ Construction
- ◆ Maintenance & repair
- ◆ Service organizations
- ◆ Utilities

### Sales Force Automation in following industries:

- ◆ Pharmaceutical & Cosmetic
- ◆ FMCG (Fast Moving Consumer Goods)
- ◆ Food & drink
- ◆ Retail
- ◆ Wholesales & distribution

## PARTNERSHIP DESCRIPTION

### Type of partner sought

- ◆ Company
- ◆ System integrators
- ◆ Reseller of Software (ERP systems)
- ◆ Reseller of Mobile Computing devices

### Specific area of activity of the partner sought

The partner sought focuses its activities on one or more of the following industries: Construction, Maintenance & repair, Service organizations, Utilities, Pharmaceutical & Cosmetic, FMCG, Food & drink, Retail, Wholesales & distribution

### Task(s) to be performed by the partner sought

The partner is expected to integrate the proposed technical solutions in its portfolio and sell them as an "Add on Service" to their customers where there ideally have already installed some software & / or Hardware.

The partners are the first & main contact for the customers and deliver the first level support, the project management and if wanted can develop modules in our software which can be sold again via our partner network. They will be trained beforehand on the technical characteristics.

### Type of partnership sought

- ◆ Commercial partnership with technical assistance

## CURRENT STAGE OF DEVELOPMENT

Already on the market

## INTELLECTUAL PROPERTY RIGHTS

Copyright(s) registered

**Odyssee Mobile Services** → MORE  
Odyssee Mobile Services leaves your service team free to concentrate on their main goal: providing outstanding service.

- ◆ Technical staff on the job carry out **all interventions** as accurately and promptly, with all necessary information at their disposal.
- ◆ Dispatchers receive call requests and optimize the stations for the road teams in real-time.
- ◆ Used spare parts, **time sheets** and **service reports** can be filed in seconds and on-line.
- ◆ Managers have access to clear **statistics** and **detailed reports**.
- ◆ See the bigger picture and use **Odyssee Fleet Management**.

**Odyssee Mobile Sales** → MORE  
Improve your productivity, boost your turnover and your client satisfaction.

- ◆ Sellers on the job or at trade fairs can **book orders** at lightning speed, with all the information they need at their fingertips.
- ◆ **Merchandisers** go to shops, do store checks and follow up on promotions.
- ◆ Account Managers discuss **contracts** and fill in **visit reports** for further processing.
- ◆ Sales Managers have access to **detailed statistics** and **reports**.
- ◆ Use Odyssee E-commerce as an **extra sales channel**.



## POWERDALE

Your “out of the box embedded domain oriented intelligent logger”

### Address

Avenue Herbert Hoover 233  
B-1200 Brussels BELGIUM

---

### Website

[www.powerdale.be](http://www.powerdale.be)

---

### Contact person

Ms. Andreani

---

### Phone

0032 422 00 38

---

### E-mail

[ban@abe.irisnet.be](mailto:ban@abe.irisnet.be)

---

## COMPANY DESCRIPTION

Established in Brussels, capital of Europe, Powerdale has two activities. We produce electronic devices for the industrial and energy sectors, which monitor and manage automatically the power load of an industrial site. Next to this product activity, Powerdale is also an innovation partner. Together with our clients we design, produce and, when required, sell electronic and innovating tools.

We have strong credentials in start up, follow up and optimization of power generation installations. Moreover, we are experienced in metering, remote monitoring and modeling of installation during the design phase in order to validate operation modes, define and validate regulation strategies on dynamic models.

## INNOVATION DESCRIPTION

In a world where natural resources become every day scarcer, Powerdale provides you a global solution allowing the monitoring of the industrial process (datalogger) as well as managing automatically the power load of an industrial site by avoiding peaks in the consumption. This solution is integrated in your production line and centered on the concept of “out of the box embedded domain oriented intelligent logger”. The Powerdale solution is a global package of services, products and software adapted to your specific needs.

## INNOVATIVE ASPECTS AND ADVANTAGES

The Powerline system is an “out of the box” load manager. It has all I/O (Input/Output), HMI (Human Machine Interface), power and interfaces integrated in one box.

The whole of our line can be hooked on the Ethernet network of your company to be programmed and to monitor in near real time your energy consumption. The web human machine interface makes it easy to monitor data and interface with the device. It also allows remote services performed via Internet.

As the products are completely made in Belgium, they are fully customizable to the client needs.

Moreover, the Powerline offers several standard solutions. Each application software may be installed on one or more of the hardware platforms in order to offer you a complete out-of-the-box solution.

There are three different hardware platforms that may be used to host each of our embedded application software. Each platform has different characteristics and capabilities.

Furthermore, making it possible to put one or more processes on stand-by in order to avoid the peaks of energy consumption contributes in keeping the peak term of the electricity costs under control.

The Powerdale service offering contains also the following advantages:

- ◆ On site installation
- ◆ Local or remote customizing
- ◆ Regular and / or remote monitoring
- ◆ Comprehensive architecture set up of our consolidation and analysis platform
- ◆ Provision of services in ASP (application service providing)
- ◆ Metering Services

## DOMAINS OF APPLICATION

Our energy management products can be integrated in various applications domain such as :

- ◆ Monitoring of solar panels, wind mills and heat pumps,
- ◆ Limiting your peak energy consumption,
- ◆ Following of consumption for each part of your production
- ◆ User specific needs.

## CURRENT STAGE OF DEVELOPMENT

Already on the market

## INTELLECTUAL PROPERTY RIGHTS

- ◆ Patent applied but not yet granted

## PARTNERSHIP DESCRIPTION

### Type of partner sought

- ◆ Company

### Specific area of activity of the partner sought

Enterprises or any players in charge of building or industrial plants management. The partners sought could also be energy consultants or energy suppliers

### Task(s) to be performed by the partner sought

Assist end users on energy consumption analysis and integrate the device in the portfolio of options to be proposed to large accounts so that the latter can adopt it and cut costs related to energy consumption. Powerdale will provide the required technical assistance and the adaptation to the specific end users' needs, which is easy to implement.

### Type of partnership sought

- ◆ Commercial partnership with technical assistance





# network

## enterprise europe



## Environment

- ◆ **BIOREMEDIATION EUROPE**  
100% natural, organic cleaning and degreasing solution for multiple domestic or industrial applications
- ◆ **BIOREMEDIATION EUROPE**  
100% natural, organic and biodegradable product improving soil productivity, enhancing the natural defences of the plants and trees, while reducing pollution, use of pesticides, insecticides, fungicides and water requirements
- ◆ **CO2LOGIC**  
We calculate, reduce and offset CO<sub>2</sub> emissions
- ◆ **G.E.M.S.**  
More than a classic Environmental Management System





## BIOREMEDIATION EUROPE

100% natural, organic cleaning and degreasing solution for multiple domestic or industrial applications

### Address

Rue Konkel, 105/107  
B-1150 Brussels BELGIUM

### Website

[www.bioremediationeurope.com](http://www.bioremediationeurope.com)

### Contact person

Mr. Bonnyns

### Phone

0032 422 00 45

### E-mail

[abo@abe.irisnet.be](mailto:abo@abe.irisnet.be)

## COMPANY DESCRIPTION

Bioremediation Europe is an innovative SME which has an expertise in developing different 100% natural & organic products to solve several environmental problems.

In fact, Bioremediation Europe has the know-how to transform a 100% natural base component, an extract of Icelandic seaweed, in order to develop new environmentally friendly cleaning products and agricultural products.

Thus, on the one hand, Bioremediation Europe develops multiple solutions for the industrial or domestic cleaning sector, and for wastewater and soil depolluting facilities; on the other hand, it develops environmentally friendly soil conditioners and phytosanitary tonics.

Our targeted markets are:

- ◆ cleaning companies,
- ◆ restaurants,
- ◆ institutions,
- ◆ industries,
- ◆ public transports,
- ◆ pollution control facilities,
- ◆ agricultural sector...

## INNOVATION DESCRIPTION

The action of the Bioremediation Europe's 100% natural, organic cleaning and degreasing base rests on a combination of agents obtained by fermentation of Icelandic seaweed.

This represents a new concept in cleaning and degreasing agents. Thanks to the combination of its surface-active agents and its emulsifying and chelating properties, this product quickly and efficiently penetrates the organic, greases or fat deposits to eliminate them. Additionally, it removes organic substance where micro-organisms develop, permitting to get rid of nasty smells.

## INNOVATIVE ASPECTS AND ADVANTAGES

As global commitment to sustainable and environmentally friendly products increases, natural products become more and more fashionable.

Nevertheless, genuine 100% natural, organic products remain very rare, and they are often more expensive than the others.

The unique feature of this product lies in its totally natural composition and action. No harmful or hazardous chemicals or materials are used in its manufacturing.

This product is consequently fully biodegradable, and it even prevents further recontamination, which consequently increases equipment lifetime and simultaneously reduces maintenance work and related costs.

This product is also characterized by its powerful degreasing and cleaning action and by its bio-activator components, which contributes to the effectiveness of wastewater and depolluting soil treatments.

It is easy to use, totally safe for the people and the environment, even with high concentrations.

Moreover, the use of this product is cheaper than the majority of "traditional" cleaning products.

Finally, this product can be customized according to customers' needs for numerous cleaning applications.

## DOMAINS OF APPLICATION

- ◆ Elimination of grease, oil, hydrocarbons from all metallic, PVC and other water-resistant surfaces.
- ◆ Cleaning any glass surfaces (mirrors, window panes...)
- ◆ Elimination of scale and iron deposit without degrading the environment
- ◆ Septic tank and grease trap treatment
- ◆ Car cleaning because of its non-corrosive properties...
- ◆ wastewater and soil pollution treatment
- ◆ Control and elimination of odours

This technology can be customised according to customers' needs for numerous cleaning and degreasing applications

## CURRENT STAGE OF DEVELOPMENT

Already on the market

## INTELLECTUAL PROPERTY RIGHTS

Exclusive Rights, secret know-how

## PARTNERSHIP DESCRIPTION

### Type of partner sought

- ◆ Company

### Specific area of activity of the partner sought

Any producers, sellers or users of cleaning products are potential partners; just as Environment and safety departments of any kind of industries or institutions, wastewater treatment facilities or soil depolluting treatment market participants.

Partners in chemical sector and willing to diversify their product portfolio with this totally natural cleaning and degreasing technology are also looked for.

### Task(s) to be performed by the partner sought

Bioremediation Europe looks for commercial agreements with technical assistance with partners developing, selling and/or searching for cleaning and degreasing technologies.

It offers adapting the cleaning and degreasing base to the partners' specific needs.

### Type of partnership sought

- ◆ Commercial partnership with technical assistance



## BIOREMEDIATION EUROPE

100% natural, organic and biodegradable product improving soil productivity, enhancing the natural defences of the plants and trees, while reducing pollution, use of pesticides, insecticides, fungicides and water requirements

### Address

Rue Konkel, 105/107  
B-1150 Brussels BELGIUM

### Website

[www.bioremediationeurope.com](http://www.bioremediationeurope.com)

### Contact person

Mr. Bonnyns

### Phone

0032 422 00 45

### E-mail

[abo@abe.irisnet.be](mailto:abo@abe.irisnet.be)

## COMPANY DESCRIPTION

Bioremediation Europe is an innovative SME which has an expertise in developing different 100% natural & organic products to solve several environmental problems.

In fact, Bioremediation Europe has the know-how to transform a 100% natural base component, an extract of Icelandic seaweed, in order to develop new environmentally friendly cleaning products and agricultural products.

Thus, on the one hand, Bioremediation Europe develops multiple solutions for the industrial or domestic cleaning sector, and for wastewater and soil depolluting facilities; on the other hand, it develops environmentally friendly soil conditioners and phytosanitary tonics.

Our targeted markets are:

- ◆ cleaning companies,
- ◆ restaurants,
- ◆ institutions,
- ◆ industries,
- ◆ public transports,
- ◆ pollution control facilities,
- ◆ agricultural sector...

## INNOVATION DESCRIPTION

Made of an Icelandic seaweed extract that provides enzymes, nutrients, vitamins and trace elements, this 100% natural, organic and biodegradable product acts as a biocatalytic agent. It naturally enhances soil productivity and resistance to diseases, pests and erosion. It also increases water retention through deeper penetration, thus it facilitates transport of nutrients and reduces water requirements. Moreover, it gradually cleans chemical soil pollution without depleting the soil natural resources. As plants grow stronger and healthier, they are more immune to harmful parasites.

## INNOVATIVE ASPECTS AND ADVANTAGES

This 100% environmentally friendly product presents the several following advantages:

- ◆ As this organic product is totally natural, no pollution is caused at all. Furthermore, it progressively decontaminates the treated soils by enhancing their natural microbial activity.
- ◆ No other soil conditioners are needed to enhance soil productivity. With this product, the land productivity increases by up to 50% without depleting soil resources.
- ◆ The bio-catalytic action enhances penetrative characteristics of the soils so that the residual insoluble contaminants are leached more rapidly aided by periodic irrigations
- ◆ It decreases soil erosion and water requirements by reducing water run-off through deeper penetration. Water requirements are reduced by up to 20%.
- ◆ It aerates and deodorizes soils
- ◆ Plants grow stronger and healthier, and consequently become more resistant to attacks by harmful insects or noxious microorganisms such as fungi. No additional chemical fertilizers, fungicides or pesticides, that are harmful to the environment, are needed anymore.
- ◆ This product is easy to use and totally safe to handle, even with high concentrations.

- ◆ It is equally effective for farm, orchard, lawn or green house
- ◆ Last but not least, this product is cheaper to use than chemicals.

## DOMAINS OF APPLICATION

This product is suitable for vegetable, fruit and cereals cultures, trees, turf grasses and can be used in farmlands, orchards, lawns or greenhouses.

It can also be used to quickly and efficiently condition and valorize unclaimed areas or fallow lands for agricultural exploitation.

Bioremediation Europe can adapt its product to several utilization environment.

## CURRENT STAGE OF DEVELOPMENT

Already on the market

## INTELLECTUAL PROPERTY RIGHTS

Exclusive Rights, secret know-how

## PARTNERSHIP DESCRIPTION

### Type of partner sought

- ◆ Company
- ◆ Agricultural cooperatives

### Specific area of activity of the partner sought

Any producers, sellers or users of fertilizers are potential partners.

### Task(s) to be performed by the partner sought

Bioremediation Europe offers to adapt its product to the specific needs of sellers or users of agricultural products in the framework of a commercial agreement with technical assistance.

### Type of partnership sought

- ◆ Commercial partnership with technical assistance
- ◆ Exclusive agreements on European countries



## CO2logic

We calculate, reduce and offset CO<sub>2</sub> emissions

### Address

Rue des Tanneurs 60A  
B-1000 Brussels BELGIUM

---

### Website

[www.co2logic.com](http://www.co2logic.com)

---

### Contact person

Mr. Bonnyns

---

### Phone

0032 422 00 45

---

### E-mail

[abo@abe.irisnet.be](mailto:abo@abe.irisnet.be)

---

## COMPANY DESCRIPTION

CO2logic helps organizations to calculate, reduce and offset their CO<sub>2</sub> emissions. We advise on how to build a robust CSR (Corporate Social Responsibility) strategy by:

- ◆ reducing our client's energy consumption and energy costs
- ◆ reducing our client's CO<sub>2</sub> emissions and impact on climate change
- ◆ improving its image and competitiveness

We provide the following carbon consultancy services: Carbon Footprinting (Bilan Carbone<sup>®</sup>, GHG Protocol, ISO), Life Cycle Assessment (PAS 2050), Carbon Neutrality (PAS 2060), CO<sub>2</sub> offsetting and assistance in the development of CDM, Gold Standard and VCS carbon offsetting projects.

## INNOVATION DESCRIPTION

Through our carbon consultancy services we help in providing reliable data to prove the positive impacts (environmental and financial) of sustainable energy solutions or efficiency improvements.

## INNOVATIVE ASPECTS AND ADVANTAGES

Our competitive advantage comes from our credibility, experience and expertise. Organizations appreciate our thorough knowledge of the CO<sub>2</sub> market and its business influence.

Moreover, by using our service solution, clients will benefit from the following advantages:

- ◆ Increased income by reducing costs, gaining new markets and value from low carbon technologies through new carbon markets
- ◆ Improved branding resulting from enhanced corporate social responsibility

Furthermore, compared to our competitors, our service solution is a complete and integrated approach, that includes the following aspects:

- ◆ Firstly, we quantify CO<sub>2</sub> emissions by using certified Carbon footprinting/auditing methods as well as life cycle analysis.
- ◆ Secondly, we recommend actions for reducing costs, impact on climate change and fossil fuel dependency.
- ◆ Thirdly, we suggest actions for offsetting the incompressible carbon footprint to go CO<sub>2</sub> Neutral.

Another advantage of the offered service is that it includes possible participation and investment in CO<sub>2</sub> neutral projects.

Finally, clients will receive a certificate describing the CO<sub>2</sub> reductions they have achieved. Companies that become "CO<sub>2</sub> Neutral" will receive a CO<sub>2</sub> Neutral label

## DOMAINS OF APPLICATION

CO<sub>2</sub> issues concern every sector, more especially the following fields: services, construction, industry, mobility, transport and logistics. Greenhouse Gas mitigating is an opportunity in each sector, and in developing and emerging economies

## CURRENT STAGE OF DEVELOPMENT

Already on the market

## INTELLECTUAL PROPERTY RIGHTS

Copyright(s) registered

## PARTNERSHIP DESCRIPTION

### Type of partner sought

- ◆ Company

### Specific area of activity of the partner sought

The company looks for service companies, enterprises (especially in the field of services, industry, mobility, construction and transport & logistics) interested in reducing their CO<sub>2</sub> emissions or any business that develops renewable energy sources, energy efficiency or carbon abatement projects.

### Task(s) to be performed by the partner sought

To benefit from the company's know-how in order to calculate, reduce and offset one's CO<sub>2</sub> emissions.

CO<sub>2</sub>logic looks also for partners developing renewable energy sources, energy efficiency or carbon abatement projects in the developing world. These projects can be validated in the carbon markets in order to obtain carbon credits from the CO<sub>2</sub> reductions

### Type of partnership sought

- ◆ Commercial partnership with technical assistance



## G.E.M.S.

More than a classic Environmental Management System

### Address

Avenue du Commandant Lothaire 73  
B-1040 Brussels BELGIUM

### Website

[www.gemsolutions.be](http://www.gemsolutions.be)

### Contact person

Ms. Léger

### Phone

0032 800 08 42

### E-mail

[sle@abe.irisnet.be](mailto:sle@abe.irisnet.be)

## COMPANY DESCRIPTION

G.E.M.S. is an environmental consultancy company employing both engineers and economists. Our aim is to give our clients the best way possible to manage, build or refurbish their buildings.

We are specialized in offices and large housing buildings from 5000 to 50.000 m<sup>2</sup> and offer 3 different services:

Energy audits with economic studies (before the concept stage): how to build or refurbish in order to minimize the operational costs and maximize the market value of a building.

Environmental consultancy and certification (construction stage): The follow-up of a project in terms of environmental performance and it's certification (EPB, BREEAM,...)

Environmental management systems: With the available data, we set up an EMS that is tuned to the building and user needs.

## INNOVATION DESCRIPTION

The technology resides on our manner to set up the EMS and the interpretation of the data. The aim is to provide the user with information that will improve the energy management and consumption of his building as well as improve his business.



## INNOVATIVE ASPECTS AND ADVANTAGES

Our main advantage comes from the fact that we already have a large experience in energy auditing and business controlling which helped us to understand the best way possible to enhance a basic EMS concept. Our method and software is our main innovation. The only thing to bear in mind is that our EMS is people and business focused.

## DOMAINS OF APPLICATION

Every business from SMB to Large enterprises, public authorities needing to improve their environmental way of working.

## CURRENT STAGE OF DEVELOPMENT

Development phase – laboratory tested

## INTELLECTUAL PROPERTY RIGHTS

Secret know-how

## PARTNERSHIP DESCRIPTION

### Type of partner sought

- ◆ Company
- ◆ Research Center
- ◆ University

### Specific area of activity of the partner sought

After developing ZigBee sensors in order to bundle our solution, we decided to stop the sensor part of the project and keep our attention on the software part. We are looking for 2 things: A company / research center / University providing ZigBee sensors, and a company providing a first field experience.

### Task(s) to be performed by the partner sought

Provide us with low consumption wireless energy sensors such as temperature, pressure, water,... The sensors must be able to be placed quickly and non-invasively.

### Type of partnership sought

- ◆ Technological partnership
- ◆ Commercial partnership with technical assistance

# network enterprise europe



## Urban & creative industries

- ◆ **AEG BELGIUM**  
High Power DC withdrawable switchgear for 3kV railway applications
- ◆ **AEG BELGIUM**  
Intelligent “embarked” mobile unit with digital radio terminal for public transport applications
- ◆ **SOLVAY**  
A new process for continuous production of PVC honeycomb structures
- ◆ **SOLVAY**  
New intelligent material combining vynile with nanoparticles of clay
- ◆ **SOLVAY**  
PVC blends for good abrasion resistance and ultra-flexible applications
- ◆ **SOLVAY**  
PVC blends with enhanced softening temperature, improved fire resistance and good processability





## AEG Belgium

High Power DC withdrawable switchgear for 3kV railway applications

### Address

Quai de Biestebroekkaai 300  
B-1070 Brussels BELGIUM

### Website

[www.aegbelgium.be](http://www.aegbelgium.be)

### Contact person

Ms. Léger

### Phone

0032 800 08 42

### E-mail

[sle@abe.irisnet.be](mailto:sle@abe.irisnet.be)

## COMPANY DESCRIPTION

As value added integrator delivering tailor-made solutions and services, AEG Belgium provides end-to-end solutions in the field of telecommunication and energy distribution systems.

### Our Products

#### Telecommunication systems

- ◆ Radio infrastructure and applications (e.g. GPS, AVL, ...)
- ◆ Voice infrastructure and applications (e.g. call centre, unified messaging, ...)
- ◆ Passenger Information Display solutions using LCD technology
- ◆ Dispatching infrastructure and applications (e.g. localization software)

#### Energy distribution systems

- ◆ Industrial applications: Uninterruptable power Supply, Thyristor Power Regulators, Switch Gears, Motor Control Centers, Power Quality Management, Transformers Control Electronics, Modular Assembly Systems
- ◆ Railway energy: Complete substations for AC and DC networks, Catenary Systems for AC and DC networks

### Our targeted markets

- ◆ Public Transport Companies (rail, tram and road)
- ◆ Private Industries

## INNOVATION DESCRIPTION

Our long experience in the field of railway traction substations has allowed us to develop several solutions for trains as well as for trams, adapted to any customer's requirement.

AEG Belgium developed a new cubicle for DC-current applications. The approach was to have a type-tested cubicle in a withdrawable execution equipped with a high speed AEG circuit breaker.

## INNOVATIVE ASPECTS AND ADVANTAGES

- ◆ New Cubicle design with new isolation material to achieve high breaking capacity until 70kA at 3.6kV
- ◆ ARC Flash resistance improved
- ◆ Motor withdrawable
- ◆ Highest breaking capacity on the market, type tested

## DOMAINS OF APPLICATION

3KV DC railway tracks

## CURRENT STAGE OF DEVELOPMENT

Already on the market

## INTELLECTUAL PROPERTY RIGHTS

Secret know-how

## PARTNERSHIP DESCRIPTION

### Type of partner sought

- ◆ Company

### Specific area of activity of the partner sought

- ◆ Railways fixed material

### Task(s) to be performed by the partner sought

- ◆ Bringing our product to the market

### Type of partnership sought

- ◆ Commercial partnership with technical assistance



## AEG Belgium

Intelligent “embarked” mobile unit with digital radio terminal for public transport applications

### Address

Quai de Biestebroekkaai 300  
B-1070 Brussels BELGIUM

### Website

[www.aegbelgium.be](http://www.aegbelgium.be)

### Contact person

Ms. Léger

### Phone

0032 800 08 42

### E-mail

[sle@abe.irisnet.be](mailto:sle@abe.irisnet.be)

## COMPANY DESCRIPTION

As value added integrator delivering tailor-made solutions and services, AEG Belgium provides end-to-end solutions in the field of telecommunication and energy distribution systems.

### Our Products

#### Telecommunication systems

- ◆ Radio infrastructure and applications (e.g. GPS, AVL, ...)
- ◆ Voice infrastructure and applications (e.g. call centre, unified messaging, ...)
- ◆ Passenger Information Display solutions using LCD technology
- ◆ Dispatching infrastructure and applications (e.g. localization software)

#### Energy distribution systems

- ◆ Industrial applications: Uninterruptable power Supply, Thyristor Power Regulators, Switch Gears, Motor Control Centers, Power Quality Management, Transformers Control Electronics, Modular Assembly Systems
- ◆ Railway energy: Complete substations for AC and DC networks, Catenary Systems for AC and DC networks

### Our targeted markets

- ◆ Public Transport Companies (rail, tram and road)
- ◆ Private Industries

## INNOVATION DESCRIPTION

### INNOVATION DESCRIPTION

Our technology combines computer technology with radio communication. The terminal includes a digital radio controlled by a microcomputer and allows for voice and data communication between the vehicle and the dispatching. The terminal is suited for metro and railway cars, trams or busses. The terminal can interface with different equipments of the vehicle by means of digital inputs/outputs, serial lines or Ethernet. It is certified for rail applications and it meets all major railway certifications.

## INNOVATIVE ASPECTS AND ADVANTAGES

Our main advantages are:

- ◆ Know-how: our know-how covers the fields of radio communication, computer technologies embarked mechanical design and production which allows us to design a terminal perfectly suited for the needs of public transport companies.
- ◆ Versatility: our terminal can be integrated with all existing public transport vehicles and can also be equipped with digital radios from different brands.
- ◆ Reduced dimensions: the terminal has been designed to be as compact as possible in order to be easily mounted in the vehicles.
- ◆ Easy installation: the terminal is mounted in a mounting frame that can be customized to each type of vehicle. This allows for one standard terminal for all vehicles; only the mounting frame is specific to each vehicle type.
- ◆ The terminal exists in two versions: 24VDC or 72VDC
- ◆ The terminal can be supplied in an IP54 version

## DOMAINS OF APPLICATION

We provide this terminal for all public transport companies which want to have voice and data communication with their vehicles and the drivers. It allows for voice communication between driver and dispatcher and for data communication between the vehicle and central computers.

## CURRENT STAGE OF DEVELOPMENT

Already on the market

## INTELLECTUAL PROPERTY RIGHTS

Secret know-how

## PARTNERSHIP DESCRIPTION

### Type of partner sought

- ◆ Company

### Specific area of activity of the partner sought

- ◆ Sellers of mobile electronic equipment to public transport companies
- ◆ Radio integrators having public transport companies as customers
- ◆ Public transport companies searching for tailor made in-vehicle radio solutions (able to integrate their own applications)

### Task(s) to be performed by the partner sought

- ◆ Software integration and development for specific public transport markets

### Type of partnership sought

- ◆ Commercial partnership with technical assistance



## SOLVAY

A new process for continuous production of PVC honeycomb structures

---

### Address

Rue de Ransbeek, 310  
B-1120 Brussels BELGIUM

---

### Website

[www.solvay.com](http://www.solvay.com)

---

### Contact person

Ms. Andreani

---

### Phone

0032 422 00 38

---

### E-mail

[ban@abe.irisnet.be](mailto:ban@abe.irisnet.be)

---

## COMPANY DESCRIPTION

The story of the Solvay group began on 15 April 1861, when Ernest Solvay patented a revolutionary ammonia-soda process for producing sodium carbonate. - also known as soda ash - using common salt, ammonia, carbon dioxide (CO<sub>2</sub>) and lime.

Solvay has grown to become a global Group active in Chemistry, with two Sectors of activity today:

- ◆ Chemicals
- ◆ Plastics

Solvay decided in 2009 to refocus its activities in order to accelerate the implementation of its sustainable and profitable growth strategy - which led to the sale of its entire pharmaceutical business.

## INNOVATION DESCRIPTION

Solvay has developed a new and original extrusion process for continuous production of PVC (polyvinyl chloride) honeycombs.

So far, the composite market mainly offers PP, aluminiums and Nomex<sup>®</sup> honeycombs solutions, a restricted offer that does not address, for economical and/or technical reasons, the various requirements coming from the market. In addition, all these honeycombs are produced through batch processes, presented as expensive and not very flexible solutions.

Owing to a strong experience in plastics processing, Solvay developed a new one-step process, based on a modified flat die extrusion, to produce honeycombs in all types of thermoplastics and, in particular, in PVC. The process consists of extruding in the same device a flat plate, splitting it into parallel strips and making the cells by alternatively blowing air between two strips and drawing up air between the adjacent strips. The strips, already in melted phase, come in contact and stick together, forming a honeycomb that can be 0.5 to 30 mm thick. Cell size and shape can be varied to get a large range of properties, in particular the winding of the honeycomb in the cold state without damaging the structure. The cells can be filled to offer additional properties as thermal or acoustic insulation.

In addition, the process can be completed by the co-extrusion technology to produce multilayer honeycombs

that offer functionalised surfaces.

The possibility to produce PVC honeycombs in different designs, widths and thicknesses in a continuous process opens a host of highly interesting prospects in building construction and insulation, sports & leisure, cars, furniture and soil stabilisation.

At last, the PVC Nidacell® honeycomb can easily be associated with different materials in cover to make composite panels sandwiches.

Solvay intends to deploy the use of this technology by licensing both thermoplastics processors and end users consumers. Based on its processing know-how, its simulation and measurements tools as well as its knowledge on thermoplastics compounds, the company intends to give its licensees all access to the various ways of differentiation and improvements of properties.

## INNOVATIVE ASPECTS AND ADVANTAGES

The above-described process is an original one-step in-line process to produce honeycombs. It allows the making of honeycombs with different thicknesses and different cell sizes and shapes, offering a larger range of possibilities in term of formability, with no necessity to stop and reset the production line. Based on extrusion, it is opened to most of the thermoplastics and especially to PVC, allowing the customers to enter into new markets. The addition of co-extrusion, not applicable in the other common processes, offers unique core and surface properties .

## DOMAINS OF APPLICATION

Honeycomb and sandwiches panels for transport applications (automotive, trucks, boats, aircraft and railway), building applications (smart flame retardant and/or isolated panels, self-carrying walls, technical grounds, coffered ceiling, formwork, etc.), furniture, etc

## CURRENT STAGE OF DEVELOPMENT

Available for demonstration - field tested

## INTELLECTUAL PROPERTY RIGHTS

Patent granted: Family 1: granted patent : BE1651424; Family 2: application pending EP 1804994; Family 3: granted patent EP1924420; Family 4: granted patent EP1868800; Family 5 : granted patent EP1901907; Family 6 : granted patent FR0512663 application pending EP1963088; Family 7 : application pending WO2009/101063; Family 8 : application pending WO 2009/115521

## PARTNERSHIP DESCRIPTION

### Type of partner sought

- ◆ Company, at least a medium-size company; background knowledge in PVC processing is required

### Specific area of activity of the partner sought

- ◆ Thermoplastic sheet, profile or honeycomb extrusion; sandwich panel manufacturing or processing, major players active in automotive, building or “flat” thermoplastic products

### Task(s) to be performed by the partner sought

- ◆ Acquire the proposed technology via a license agreement.

### Type of partnership sought

- ◆ License agreement





## SOLVAY

New intelligent material combining  
vynile with nanoparticles of clay

---

### Address

Rue de Ransbeek, 310  
B-1120 Brussels BELGIUM

---

### Website

[www.solvay.com](http://www.solvay.com)

---

### Contact person

Ms. Andreani

---

### Phone

0032 422 00 38

---

### E-mail

[ban@abe.irisnet.be](mailto:ban@abe.irisnet.be)

---

## COMPANY DESCRIPTION

The story of the Solvay group began on 15 April 1861, when Ernest Solvay patented a revolutionary ammonia-soda process for producing sodium carbonate. - also known as soda ash - using common salt, ammonia, carbon dioxide (CO<sub>2</sub>) and lime.

Solvay has grown to become a global Group active in Chemistry, with two Sectors of activity today:

- ◆ Chemicals
- ◆ Plastics

Solvay decided in 2009 to refocus its activities in order to accelerate the implementation of its sustainable and profitable growth strategy - which led to the sale of its entire pharmaceutical business.

## INNOVATION DESCRIPTION

Solvay, leading producer of homo and copolymers of PVC and PVDC (Poly-Vinylidene Dichloride) in emulsion and suspension process, has succeeded to produce a PVC with nano dispersion of bentonite (nanoparticles of clay) in it. Bentonite - an absorbent aluminium phyllosilicate generally impure clay - is usually not used in PVC due to difficulties in fine dispersion.

PVC is usually mixed with additives and processed as a plastic material, for instance to prepare a plastisol. The same can be done with the new nanocompound giving unique properties to produce plastisols, coatings, films, mastics,...

The proposed process enables a nano dispersion of bentonite in PVC which keeps the time stability and transparency of the plastisol unchanged or even improved. In this case it is possible to use much more plasticizer than usual. Plastisols using the nanocompound may have higher viscosity than conventional PVC, useful to new applications.

Solvay looks for partners to set up technical cooperation in order to develop new applications which may be the use as powder or within a liquid such as plasticizer (plastisol).

## INNOVATIVE ASPECTS AND ADVANTAGES

The innovation is an emulsion-type PVC with nanoparticles of clay (bentonite) dispersed in it. The process enables nano dispersion of bentonite in PVC, resulting in higher viscosity and thixotropy of PVC pastes produced with this nanocompound. This technique provides more stable plastisols as a function of time and higher thermal stability while transparency remains unchanged or even improved. It is possible to use much more plasticisers in the formulations than the usual levels.

The main advantages of this innovation in comparison with existing products are:

- ◆ Higher viscosity levels;
- ◆ Higher pseudoplasticity of pastes, resulting in non-sagging effects;
- ◆ Higher thixotropy of plastisols, even at high doses of plasticizer;
- ◆ Extra soft vinyl articles while retaining viscosity levels;
- ◆ Higher thermal stability;
- ◆ Increased abrasion resistance;
- ◆ Possibility of increasing barrier properties in films

## DOMAINS OF APPLICATION

The current and potential domains of application are the production of plastisols for the manufacturing of thick coatings (3D spread coating), flexible films, tarpaulins, conveyor belts, automotive mastics (seam and underbody sealants), construction mastics, adhesives, rigid foams, paints, artificial leather and floorings. Potential use as an additive for rigid films, profiles and other polymers is also envisaged

## CURRENT STAGE OF DEVELOPMENT

Available for demonstration - field tested

## INTELLECTUAL PROPERTY RIGHTS

Patent granted FR - 03.14766 - 16/12/2003

## PARTNERSHIP DESCRIPTION

### Type of partner sought

- ◆ Companies/industrial partners for development of new applications. Manufacturer of material using plastisols or plastic powders as a raw material

### Specific area of activity of the partner sought

- ◆ Manufacturing of plastisols, coatings, films, adhesives, paints, mastics, sticky objects, automotive

### Task(s) to be performed by the partner sought

- ◆ The partner: development of the new application
- ◆ The material producer : development of new material for the requested application
- ◆ Jointly: evaluation of the new material in the application

### Type of partnership sought

- ◆ Technical cooperation (joint further development, testing of new applications, adaptation to specific needs)



## SOLVAY

PVC blends for good abrasion resistance and ultra-flexible applications

---

### Address

Rue de Ransbeek, 310  
B-1120 Brussels BELGIUM

---

### Website

[www.solvay.com](http://www.solvay.com)

---

### Contact person

Ms. Andreani

---

### Phone

0032 422 00 38

---

### E-mail

[ban@abe.irisnet.be](mailto:ban@abe.irisnet.be)

---

## COMPANY DESCRIPTION

The story of the Solvay group began on 15 April 1861, when Ernest Solvay patented a revolutionary ammonia-soda process for producing sodium carbonate. - also known as soda ash - using common salt, ammonia, carbon dioxide (CO<sub>2</sub>) and lime.

Solvay has grown to become a global Group active in Chemistry, with two Sectors of activity today:

- ◆ Chemicals
- ◆ Plastics

Solvay decided in 2009 to refocus its activities in order to accelerate the implementation of its sustainable and profitable growth strategy - which led to the sale of its entire pharmaceutical business

## INNOVATION DESCRIPTION

Solvay succeeded to produce special plasticized PVC blends containing thermoplastics polyurethanes.

Flexible PVC is known for its pseudo-elastomeric behavior. However, mechanical properties, plasticizer migration, poor elastic recover after deformation and very low abrasion resistance have always been considered drawbacks that precluded its usage in many valuable applications.

This technology offer is aimed to provide a special range of products based on plasticized PVC and thermoplastic polyurethanes with improved mechanical properties, good elasticity and improved abrasion resistance bounded at the customer's requirements. Furthermore, transparency, low amount of plasticizer and the same PVC processability make these products suitable for a wide range of applications.

First developments of these products are giving a very good feed-back in the field of extrusion and injection moulding.

Solvay is now looking for partners, customers and markets in order to improve the product range and develop new application in the PVC domain.

## INNOVATIVE ASPECTS AND ADVANTAGES

VC/polyurethanes blends are products with interesting properties in terms of:

- ◆ Improved abrasion resistance.
- ◆ Good mechanical properties.
- ◆ Good elasticity and shape recovery after bending.
- ◆ Transparency

## DOMAINS OF APPLICATION

The current and potential domains of application are: hoses – cables – shoes soles – joints – wheels

## CURRENT STAGE OF DEVELOPMENT

Available for demonstration - field tested

## INTELLECTUAL PROPERTY RIGHTS

Secret know-how

## PARTNERSHIP DESCRIPTION

### Type of partner sought

- ◆ Industrial partners for development of new applications. Manufacturer of plasticized PVC or thermo-plastic polyurethanes.

### Specific area of activity of the partner sought

- ◆ Fluids transport, powder transport, electric cables, shoes soles etc...

### Task(s) to be performed by the partner sought

- ◆ The partner : development of the new application
- ◆ The material producer : tuning of or further development of the new material for the requested application

Jointly : evaluation of the new material in the application

### Type of partnership sought

- ◆ Technological partnership: Testing of new applications, Adaptation to specific needs



## SOLVAY

PVC blends with enhanced softening temperature, improved fire resistance and good processability

### Address

Rue de Ransbeek, 310  
B-1120 Brussels BELGIUM

### Website

[www.solvay.com](http://www.solvay.com)

### Contact person

Ms. Andreani

### Phone

0032 422 00 38

### E-mail

[ban@abe.irisnet.be](mailto:ban@abe.irisnet.be)

## COMPANY DESCRIPTION

The story of the Solvay group began on 15 April 1861, when Ernest Solvay patented a revolutionary ammonia-soda process for producing sodium carbonate. - also known as soda ash - using common salt, ammonia, carbon dioxide (CO<sub>2</sub>) and lime.

Solvay has grown to become a global Group active in Chemistry, with two Sectors of activity today:

- ◆ Chemicals
- ◆ Plastics

Solvay decided in 2009 to refocus its activities in order to accelerate the implementation of its sustainable and profitable growth strategy - which led to the sale of its entire pharmaceutical business

## INNOVATION DESCRIPTION

Solvay succeeded to produce special PVC blends containing styrenics co-polymers.

Styrene block co-polymers are known for their high softening temperature and good processability. But also for they drawbacks such as a weak fire resistance and weak impact strength (as SAN co-polymers).

This technology offer is aimed to provide a special range of products based on PVC with an improved softening temperature compared to standard PVC, good impact strength and optimal fire resistance bounded to the chosen application.

First developments of these products are giving a very good feed-back in the field of rigid extrusion and injection.

Solvay is now looking for partners, customers and markets in order to improve the product range and develop new applications.

## INNOVATIVE ASPECTS AND ADVANTAGES

PVC/co-Styrenics blends are products with interesting properties in terms of:

- ◆ Improved softening/deflection temperature.
- ◆ Improved impact resistance.
- ◆ Good colorability.
- ◆ Good processability

## DOMAINS OF APPLICATION

The current and potential domains of application are:  
Computer cases – Electric boxes – Pipes and fittings –  
Automotive parts.

## CURRENT STAGE OF DEVELOPMENT

Available for demonstration - field tested

## INTELLECTUAL PROPERTY RIGHTS

Secret know-how

## PARTNERSHIP DESCRIPTION

### Type of partner sought

- ◆ Industrial partners for development of new applications. Manufacturer of rigid thermoplastic extruded or injected products.

### Specific area of activity of the partner sought

- ◆ Pipes, fittings, boxes, cases, etc...

### Task(s) to be performed by the partner sought

- ◆ The partner : development of the new application
- ◆ The material producer : tuning of or further development of the new material for the requested application
- ◆ Jointly : evaluation of the new material in the application

### Type of partnership sought

- ◆ Technological partnership: Testing of new applications, Adaptation to specific needs



## Support Organisations

In Brussels, you can count on the support of several local organisations which will assist you – per sector or per expertise – in the development of your business or research activities in the Brussels Capital Region.

They range from Universities and research centres, to association groupings or federations, organisations supporting export and foreign trade, business incubators, institutes for the encouragement of research and innovation, etc.

Please contact Mrs Nadine Bettens by phone + 32 2 422 00 21 or by mail [nbe@abe.irisnet.be](mailto:nbe@abe.irisnet.be) to have the name of the most suitable support organisation complying with your needs.



